



706/438 Victoria Avenue CHATSWOOD NSW

1 1 1

Situated on the 7th floor of the renowned Metro Grand Tower in Chatswood the major commercial and retail hub of the Sydney North Shore, this modern one bedroom plus study apartment incorporates both the ultimate luxury living with privacy and sophisticated interior.

Centrally located only 12 kilometres from Sydney CBD, this nearly new apartment is surrounded by shops, restaurants, cafes and entertainment venues. Chatswood chase and Westfield shopping centre are just a short stroll away. The new Chatswood interchange including train station and bus stops are downstairs at your doorsteps.

Features including designer gourmet kitchens with stainless steel appliances, Ceasor Stone Benchtop, floor to

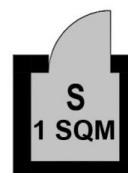
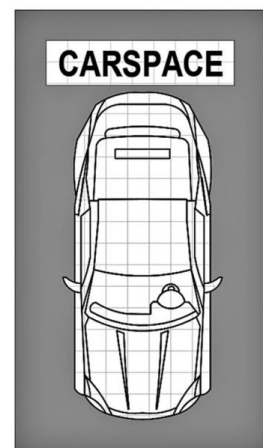
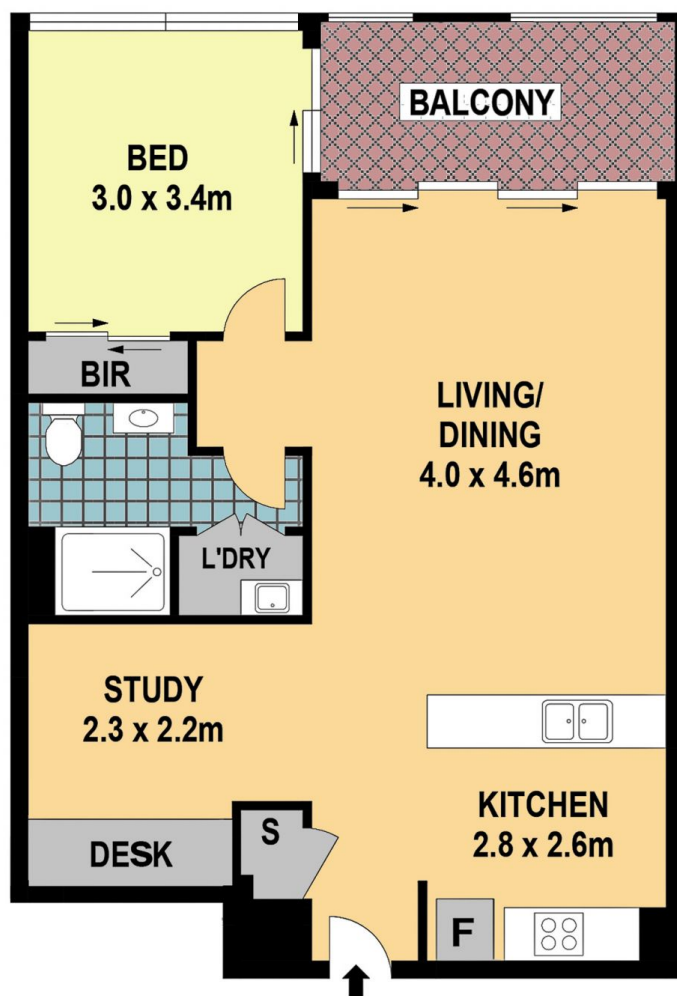
Type : Apartment

View : <https://www.bmerealestate.com.au/sale/nsw/north-shore-lower/chatswood/residential/apartment/7136452>



John (junjie) Zhu
02 9739 9266

[For full version visit the website](https://www.bmerealestate.com.au)



Scale in metres. Indicative only. Dimensions are approximate. All information contained herein is gathered from sources we believe to be reliable. However we cannot guarantee its accuracy and interested persons should rely on their own enquiries



706/438 Victoria Avenue, Chatswood