



101 54A Blackwall Point Road CHISWICK NSW

2 2 2

Centrally located just 9 kilometres from Sydney CBD, this private level four 2 bedroom apartment is situated in Building E of the most renowned luxury Artisan complex which offers highly luxurious lifestyle and fantastic resort style amenities including boutique gymnasium and micro tennis court.

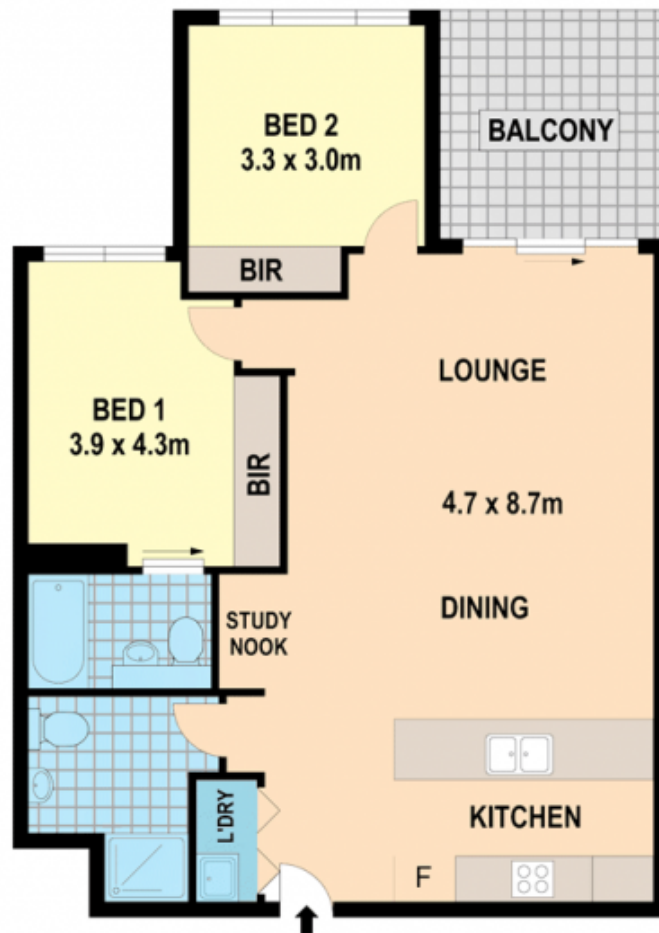
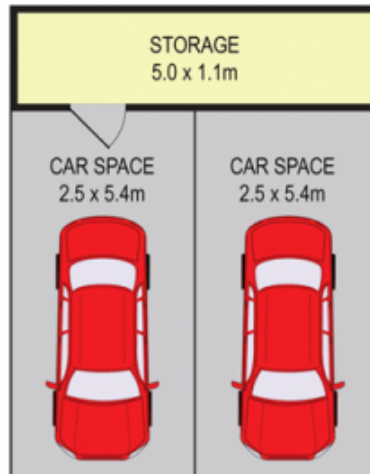
Plus this apartment also boasts excellent layout with spacious open plan design, 2 bright spacious bedrooms both with built-in wardrobe, open gourmet kitchen including stainless steel appliances and Ceasor Stone Benchtop, expansive living area flows seamlessly through stylish floor-to-ceiling glass sliding door to a large sun-drenched entertaining balcony overlooking the sweeping views over Campbell Park, fully tiled bathroom and internal laundry with dryer.

Five Dock and Abbotsford shops are within easy access,

View : <https://www.bmerealestate.com.au/sale/nsw/inner-west/chiswick/residential/apartment/7136474>



John (junjie) Zhu
02 9739 9266



Scale in metres. Indicative only. Dimensions are approximate. All information contained herein is gathered from sources we believe to be reliable. However we cannot guarantee its accuracy and interested persons should rely on their own enquiries



101/54A Blackwall Point Rd Chiswick