



## 23 Cloud Street SCHOFIELDS NSW

4 2 2

Located in the most sought-after pockets of Schofields, this outstanding family home is scaled on a level block, providing comfortable living features open plan living rooms connecting to a private alfresco terrace and four generously sized bedrooms upstairs. Close to the Schofields station, local shopping precincts, schools, and parks, it just ticks all the boxes for the growing young families and investors.

**Type** : House  
**Land Size** : 275 sqm  
**View** : <https://www.bmerealestate.com.au/sale/nsw/western-sydney/schofields/residential/house/7136486>

### Features and highlights:

- Sun-drenched open plan living and dining area features floor to ceiling glass doors
- Reverse cycled ducted air conditioning throughout

[For full version visit the website](#)



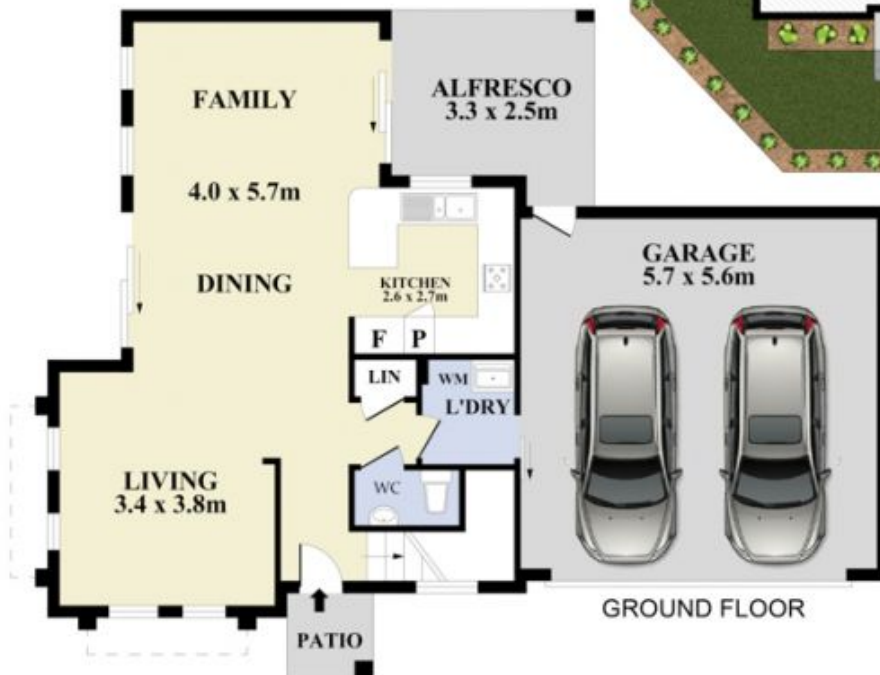
**Jane (jie) Zhu**  
0426 881 985



UPPER FLOOR



SITE PLAN  
(NOT TO SCALE)



GROUND FLOOR



Floor Plan measurements are approximate and are for illustrative purposes only. While we cannot doubt the floor plans accuracy, we make no guarantee, warranty or representation as to the accuracy and completeness of the floor plan.



## 23 Cloud Street, Schofields