



Unit 1405/3 George Julius Avenue ZETLAND NSW

3 2 2

Perched on the 14th floor of the renowned Platinum complex developed by Payce in the vibrant Victoria Park in Zetland, this luxury 3-bedroom plus study apartment incorporates both the ultimate inner city living with privacy and sophisticated interior.

Centrally located only 4 kilometres from Sydney CBD, it is surrounded by universities, hospitals, parks, golf courses and Eastern Suburb beaches. The city bus stop, East village Shopping Centre, Green Square station, restaurants, cafes are all within walking distance.

Positioned on the Northeast corner of the Platinum complex this spectacular apartment offers abundance of natural light and amazing adjacent park views and city

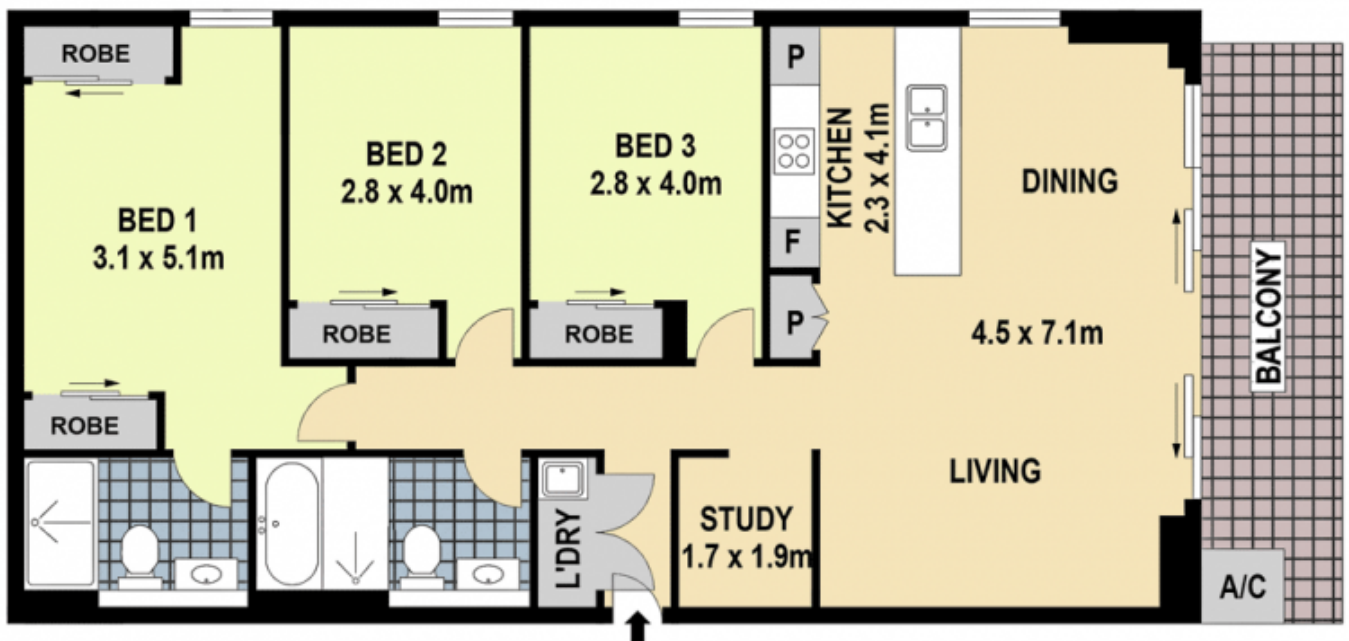
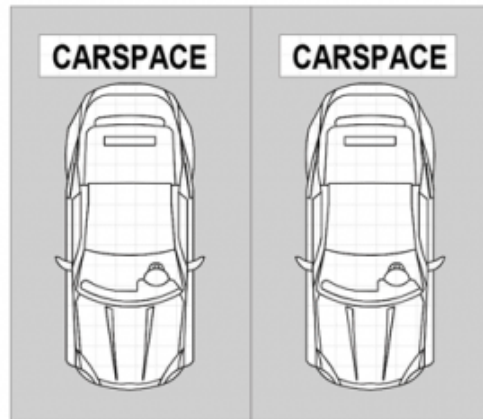
Type : Apartment

View : <https://www.bmerealestate.com.au/sale/nsw/east-ern-suburbs/zetland/residential/apartment/7136503>



John (junjie) Zhu
02 9739 9266

[For full version visit the website](https://www.bmerealestate.com.au)



Scale in metres. Indicative only. Dimensions are approximate. All information contained herein is gathered from sources we believe to be reliable. However we cannot guarantee its accuracy and interested persons should rely on their own enquiries



1405/3 George Julius Avenue, Zetland