



251/420 Pitt Street SYDNEY NSW

3 **2** **1**

Perched on the level 25th of the renowned "Mosaic Building" in Sydney CBD, this beautiful three bedroom apartment has generous living spaces that flow seamlessly from room to room, plus a panoramic view of the city skyline.

Features including designer gourmet kitchens with stainless steel appliances, Ceasor Stone Benchtop, Air Conditioning, blinds, floor coverings and much more than you can expect.

3 generous sized bedrooms, All with build-in wardrobes
Internal laundry
Air conditioning
Secured building with onsite building manager

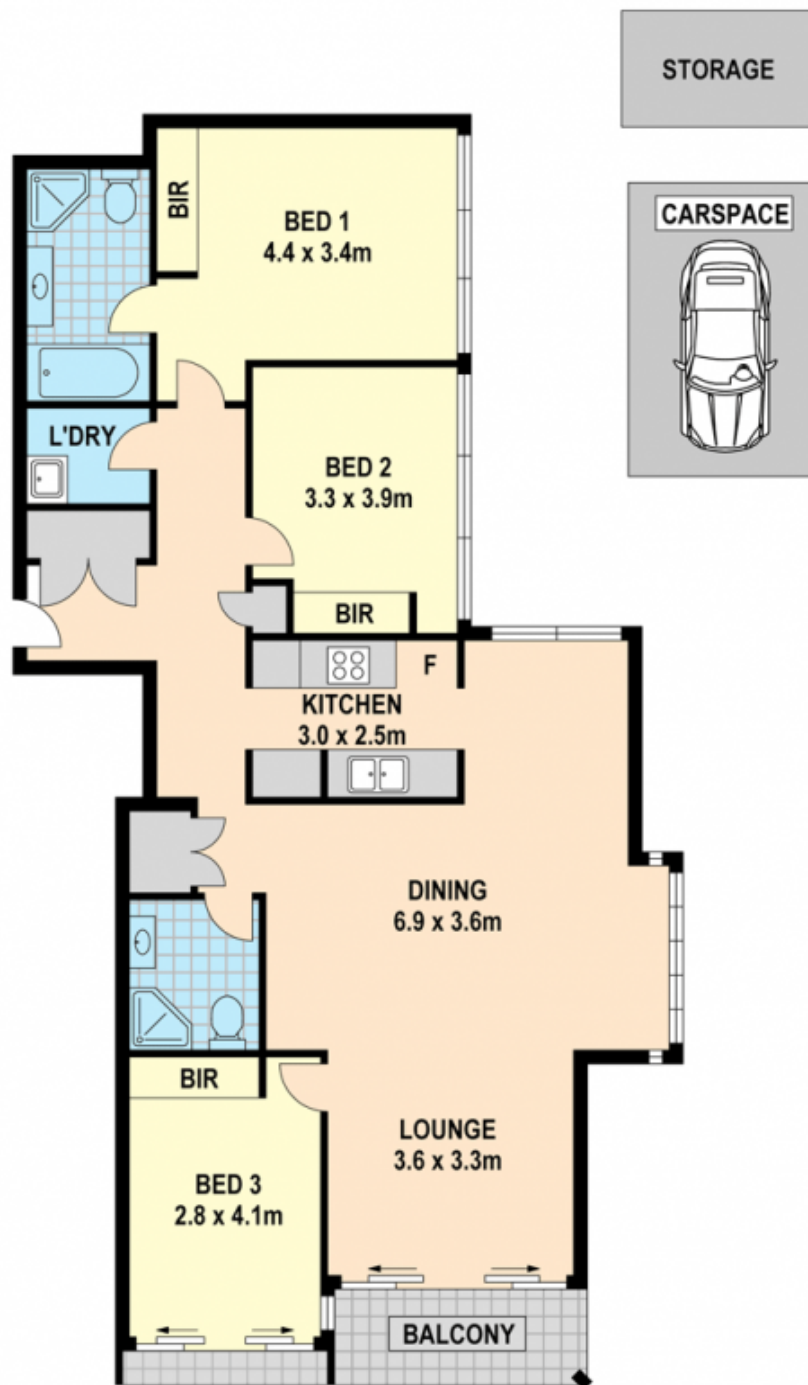
Type : Apartment

View : <https://www.bmerealestate.com.au/sale/nsw/sydney-city/sydney/residential/apartment/7136516>



John (junjie) Zhu
02 9739 9266

[For full version visit the website](https://www.bmerealestate.com.au)



251/420 Pitt Street Sydney