



21/40-42 Keeler Street CARLINGFORD NSW

1 1 1

Conveniently located in the heart of well sought-after Carlingford Suburb, this stunning 1 bedroom plus large study apartment offers a great tranquil and contemporary lifestyle to its potentials buyers with only moments walking to Carlingford Court, Carlingford Village, Carlingford Station, Popular Schools and local cafes and restaurants.

Ideally positioned on the 2nd floor with perfect Northeast facing, this attractive apartment offers abundant natural light and beautiful leafy views through its floor to ceiling glass.

This apartment also features:

Gourmet kitchen with Caesar Stone benches, gas cooking,

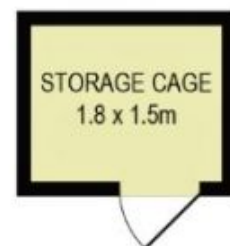
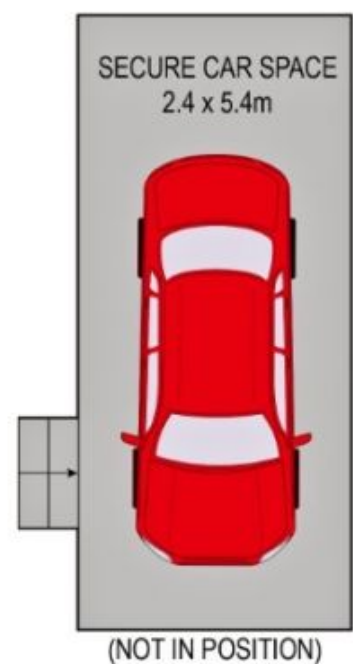
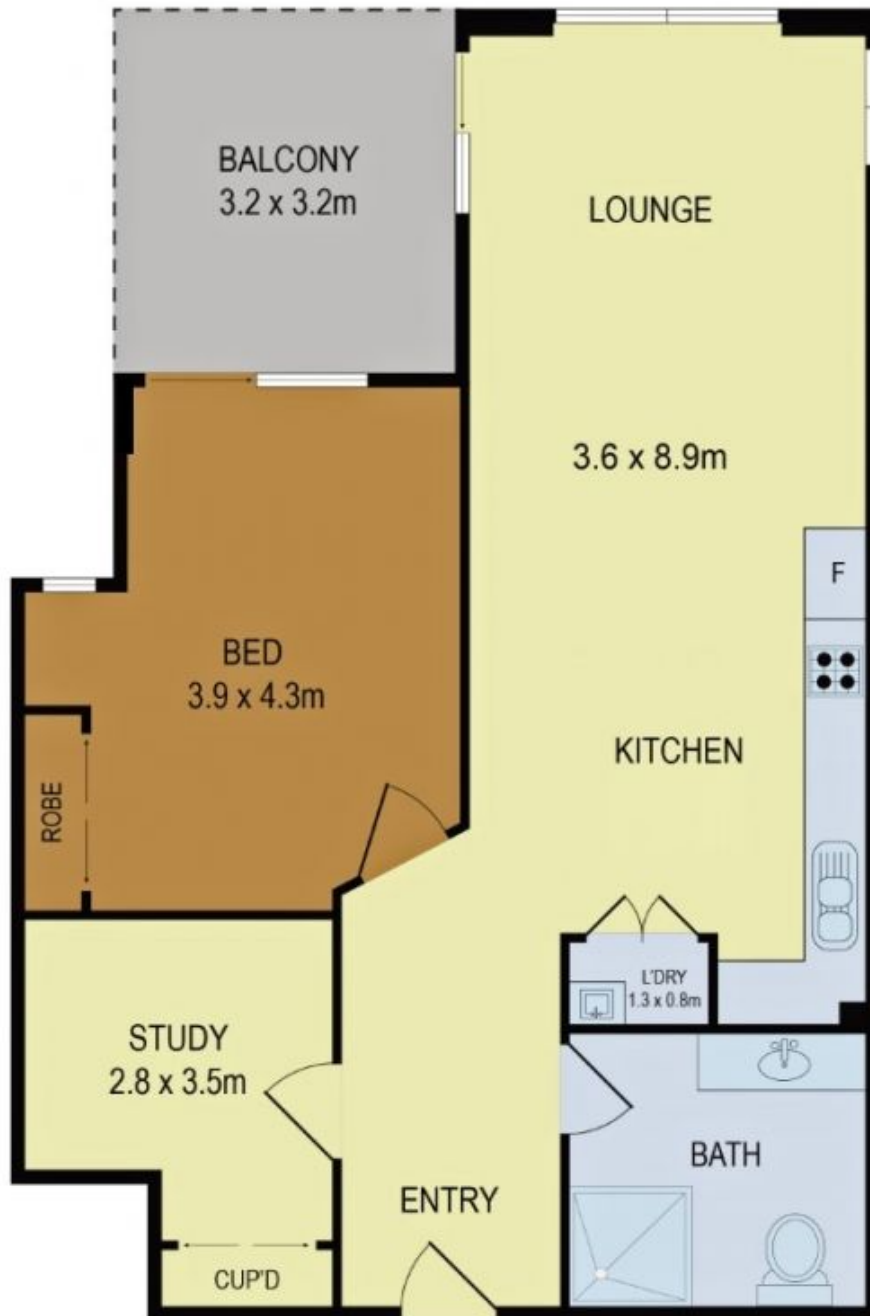
[For full version visit the website](https://www.bmerealestate.com.au/sale/nsw/northern-suburbs/carlingford/residential/apartment/7136530)

Type : Apartment

View : <https://www.bmerealestate.com.au/sale/nsw/northern-suburbs/carlingford/residential/apartment/7136530>



John (junjie) Zhu
02 9739 9266



All information contained herein is gathered from all sources we believe to be reliable. However we cannot guarantee its accuracy and interested parties should rely on their own enquiries.

21/40-42 Keeler Street, Carlingford