



64/45 Bonar Street ARNCLIFFE NSW

2 2 1

Positioned on Level 7 of this immaculate security modern building in Arncliffe, this bright spacious two-bedroom plus study apartment incorporates both enjoyable living with privacy and sophisticated interior which sets high standard of luxury apartment living in Arncliffe.

Centrally located only 10 kilometres from Sydney CBD, it is surrounded by local shops, cafes, restaurants. Arncliffe, Turrella and Wolli Creek train stations are all within walking distance. Easy access to CBD, M5 Link and Airport.

Apartment Features:

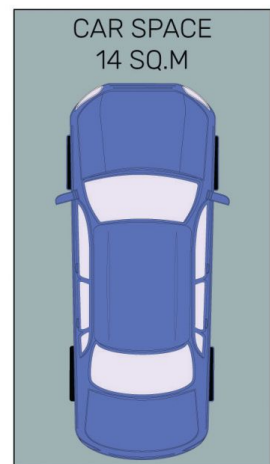
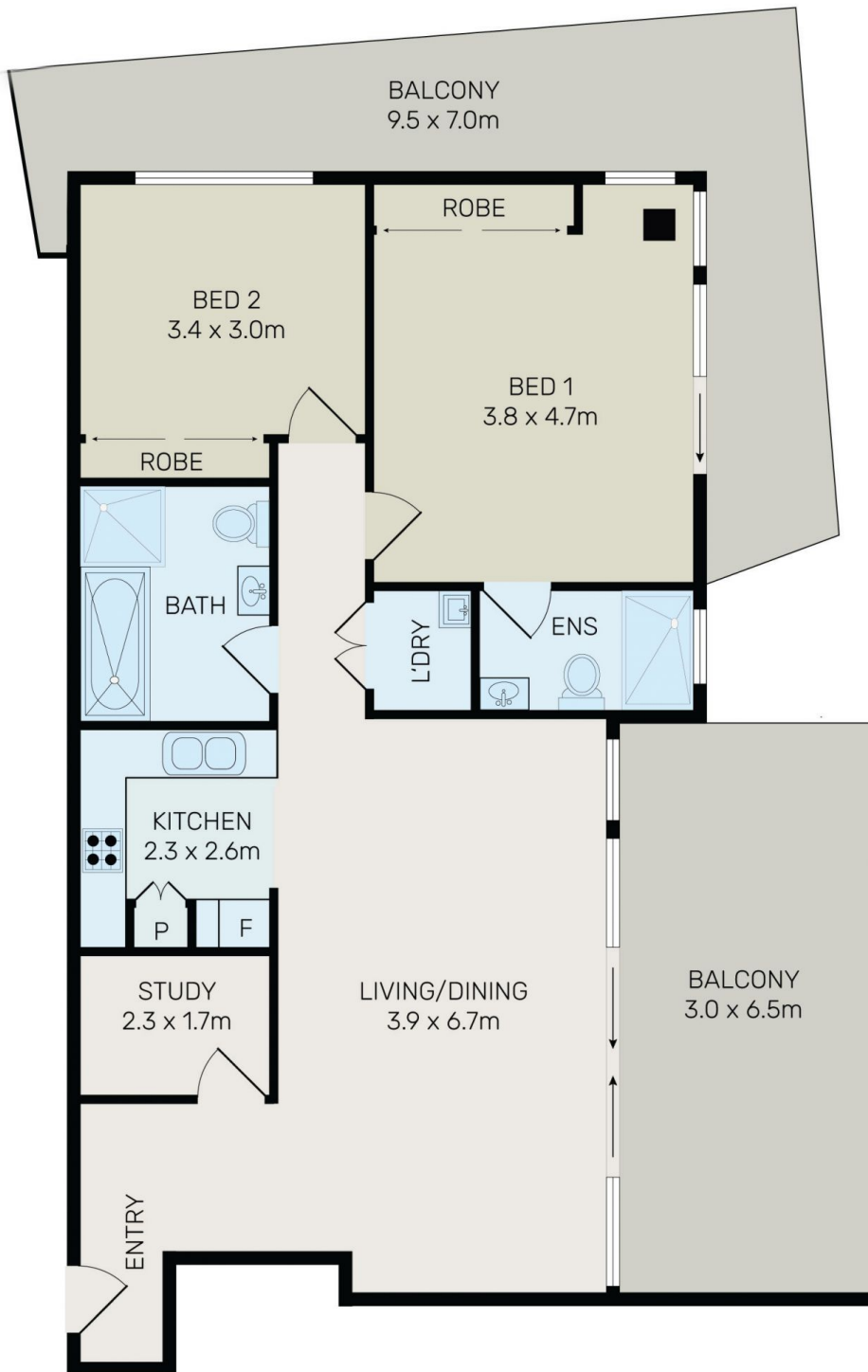
Modern open living & dining area flows seamlessly to a extra-large sun-drenched entertainer alfresco balcony

Type : Apartment
View : <https://www.bmerealestate.com.au/sale/nsw/st-george/arncliffe/residential/apartment/7136542>



John (junjie) Zhu
02 9739 9266

[For full version visit the website](https://www.bmerealestate.com.au)



All information contained herein is gathered from all sources we believe to be reliable. However we cannot guarantee its accuracy and interested parties should rely on their own enquiries.

BMEGROUP
Property + Management

64/45 Bonar Street, Arncliffe