

Actual View



## 702/2 Palm Avenue BREAKFAST POINT NSW

2 2 2

This stylish and nearly new Vermont apartment is a slice of paradise amid Breakfast Point's award-winning resort community and features a spacious and flexible floor plan with an abundance of natural light throughout. It is perfectly positioned in a location that has village cafes, shops, ferry, and Country Club facilities all within a short stroll.

- Remarkable harbour bridge & water view
- Three-bedroom size internal of 109sqm + 18sqm balcony excluding car spaces and storage
- Ideal sunny north-east aspect
- A large open layout with lounge and dining areas
- Study/Kids play area
- Wide balcony spanning the width of apartment with sheltered entertainment space

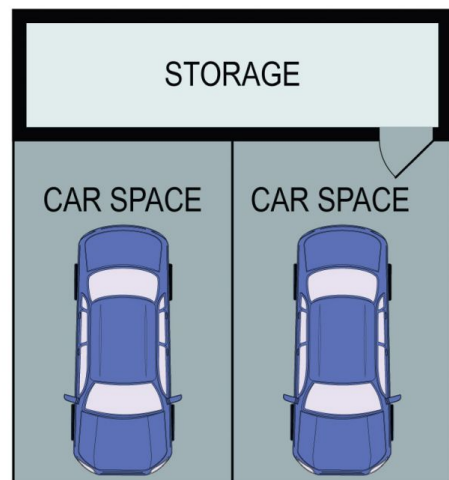
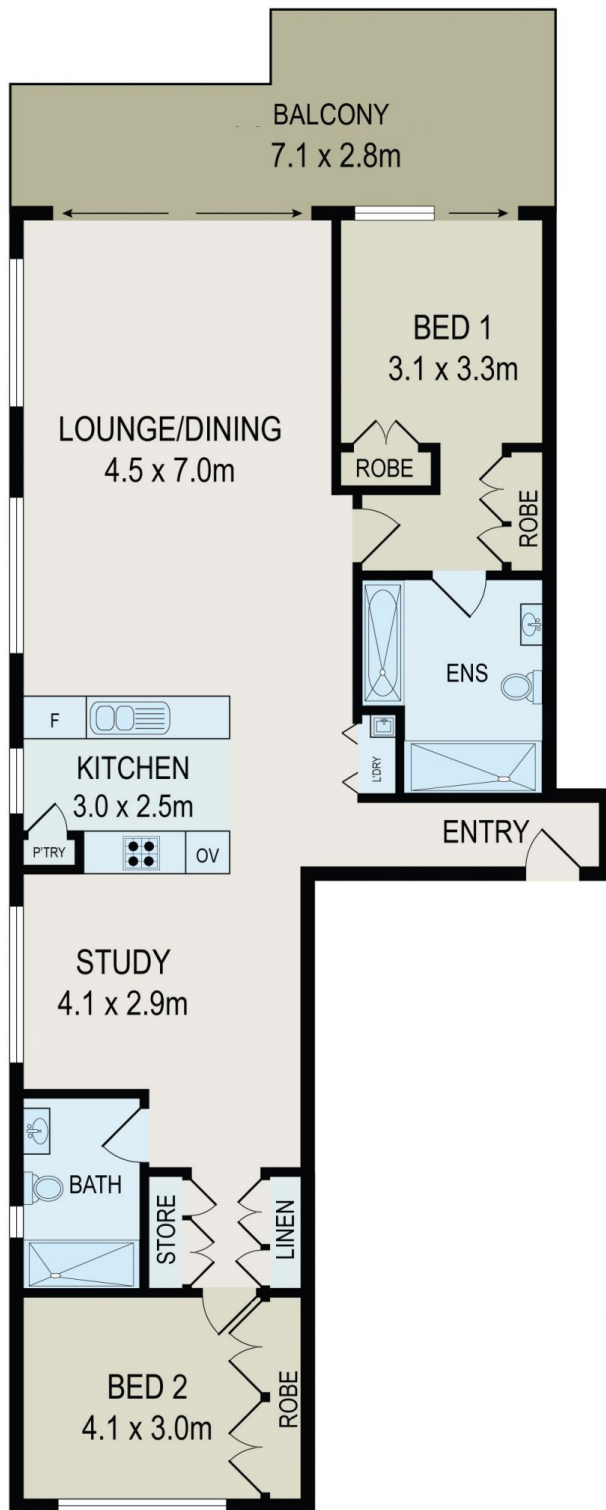
**Type** : Apartment

**View** : <https://www.bmerealestate.com.au/sale/nsw/inner-west/breakfast-point/residential/apartment/7136568>



**Jeff (kwok Fu) Chau**  
02 9739 9266

[For full version visit the website](https://www.bmerealestate.com.au)



All information contained herein is gathered from all sources we believe to be reliable. However we cannot guarantee its accuracy and interested parties should rely on their own enquiries.



702/2 Palm Avenue, Breakfast Point