



4078/2E Porter Street Ryde NSW

2 2 1

Situated in the highly sought-after renowned Crowle Estate in prime location in Ryde, this bright & spacious two-bedroom apartment incorporates an irresistible combination of bespoke finishes and creative modern design which provides a modern and convenient lifestyle to its future owner.

Enjoying a leafy outlook to the internal communal garden and bathed in natural light, this well-designed apartment would suit buyers at all stages of life. Ideal for a growing family needing space, downsizer wishing for a low maintenance home, first home buyers or savvy investors.

Close to all amenities including waterfront foreshores, choice of quality schools, local dining/cafes and Shepherds

Type : Apartment

View : <https://www.bmerealestate.com.au/sale/nsw/north-hern-suburbs/ryde/residential/apartment/7136576>

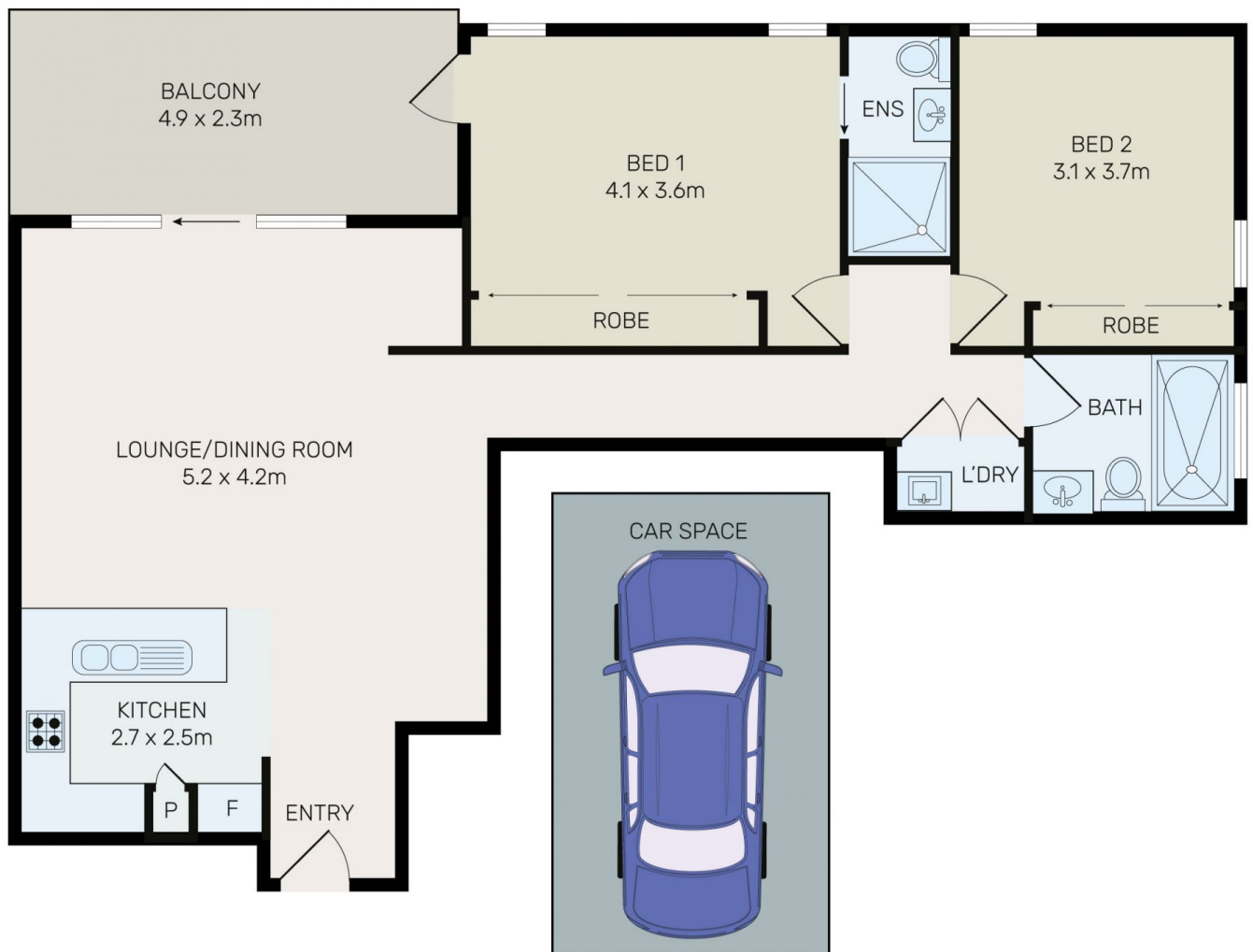


John (junjie) Zhu
02 9739 9266



Elaine Chu
02 9739 9266

[For full version visit the website](https://www.bmerealestate.com.au)



All information contained herein is gathered from all sources we believe to be reliable. However we cannot guarantee its accuracy and interested parties should rely on their own enquiries.



4078/2E Porter Street, Ryde