



719/6 Victoria Park Parade ZETLAND NSW

1 1

Located on the 7th floor of the renowned Platinum complex developed by Payce in the vibrant Victoria Park in Zetland, this luxury light-filled Northwest facing 1-bedroom plus study apartment incorporates both the ultimate inner city living with privacy and sophisticated interior.

Type : Apartment

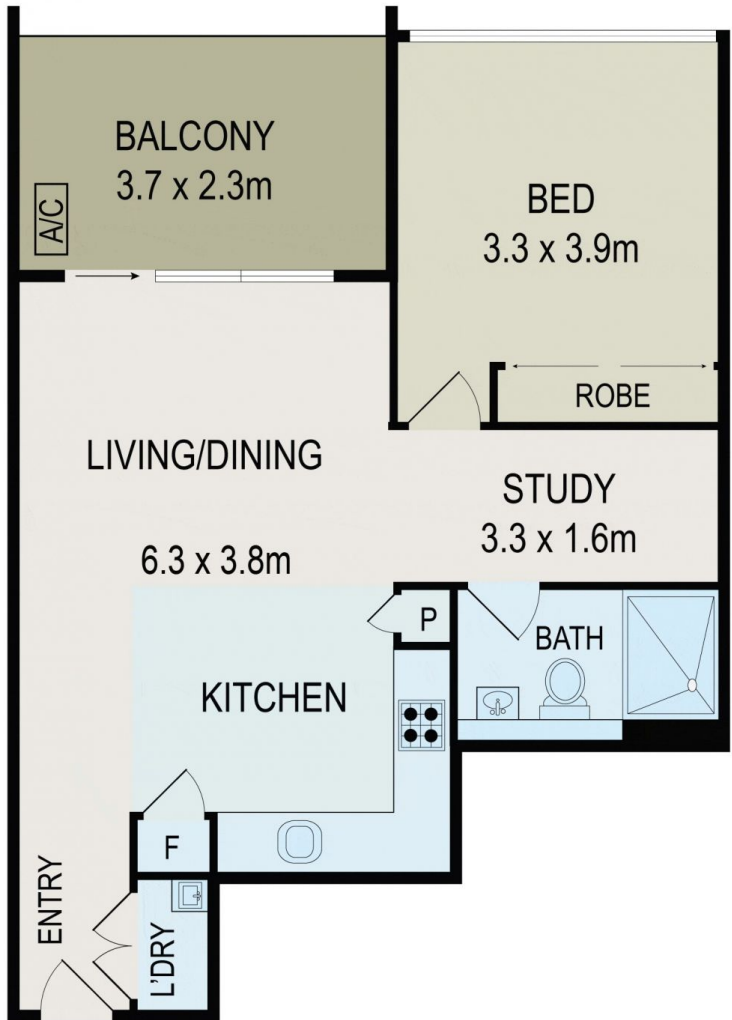
View : <https://www.bmerealestate.com.au/sale/nsw/east-ern-suburbs/zetland/residential/apartment/7136597>

Centrally located only 4 kilometres from Sydney CBD, this beautiful apartment is within walking distance to Green Square Train Station, Danks Street's creative hub and Surry Hills' vibrant dining scene, plus its also close to UNSW, Sydney University, Taylors College, Bondi junction and Coogee. The East Village shopping centre is just a stones throw away which features a new concept store Coles Supermarket, Virgin Active Health Club, Medical Centre and 50 Specialty shops including restaurants, cafes,



John (junjie) Zhu
02 9739 9266

[For full version visit the website](#)



All information contained herein is gathered from all sources we believe to be reliable. However we cannot guarantee its accuracy and interested parties should rely on their own enquiries.



719/6 Victoria Park Parade, Zetland