



213/5 Verona Drive Wentworth Point NSW

2 2 1

Be impressed with this well-maintained modern 2-bedroom apartment in the architecturally designed complex- "Atlas" in the sought-after Wentworth Point community. Boasting a desirable open floor plan, this architecturally designed apartment offers a spacious and sophisticated interior with superb finishing.

Within walking distance to Ferry Wharf, Marina Square Shopping Centre, Wentworth Point Public School, local shops, cafes, restaurants, convenient transport links to City & Parramatta and Bennelong Bridge which provides a quick link to Rhodes, this deluxe executive home offers the ultimate lifestyle for discerning buyers.

Apartment Features:

Type : Unit

View : <https://www.bmerealestate.com.au/sale/nsw/inner-west/wentworth-point/residential/unit/7439173>

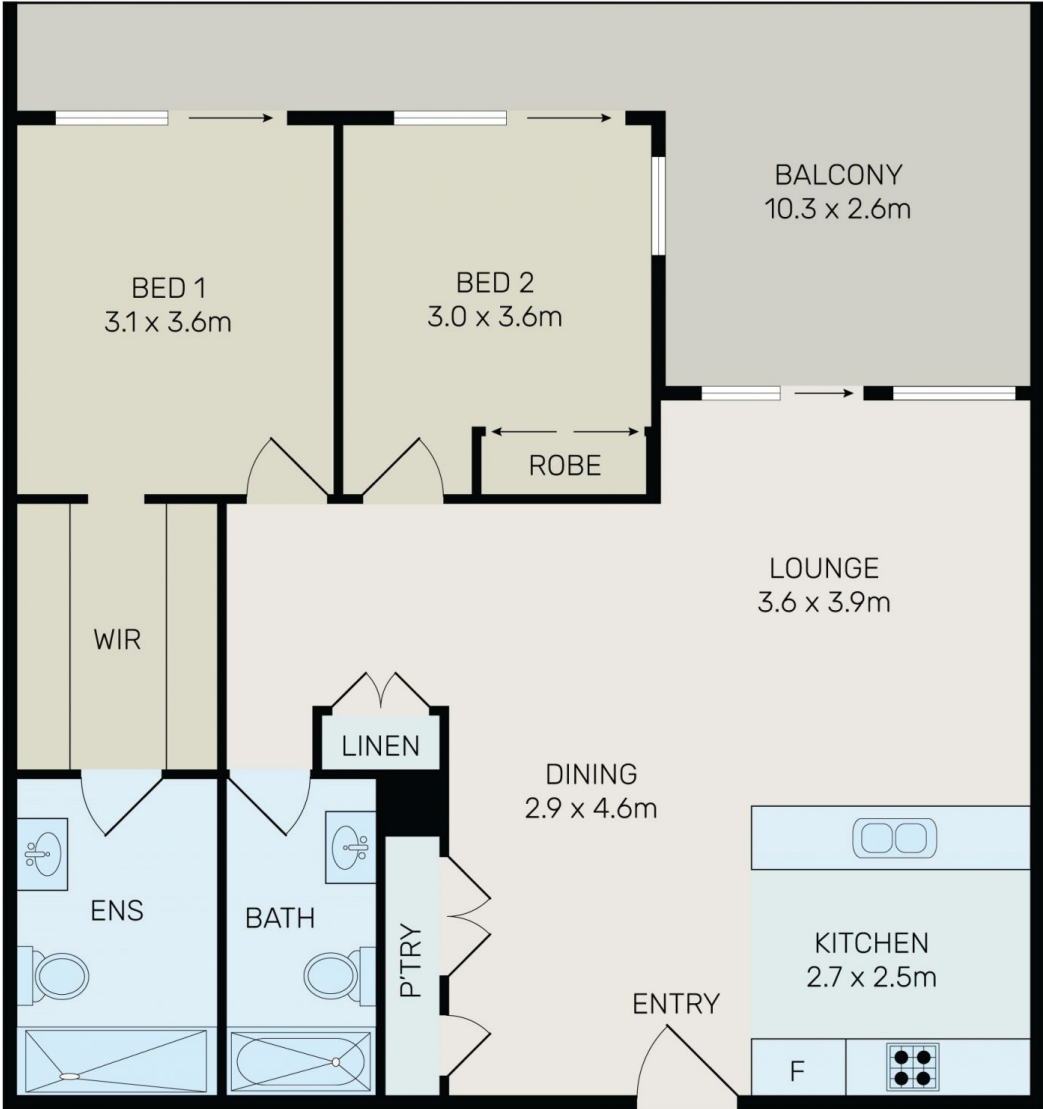
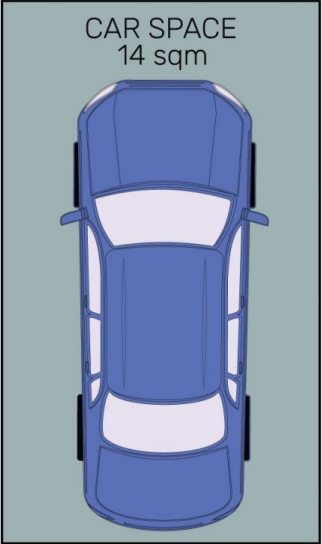


John (junjie) Zhu
02 9739 9266



Jeff (kwok Fu) Chau
02 9739 9266

[For full version visit the website](https://www.bmerealestate.com.au)



All information contained herein is gathered from all sources we believe to be reliable. However we cannot guarantee its accuracy and interested parties should rely on their own enquiries.



213/5 Verona Drive, Wentworth Point