

103/235-237 Carlingford Road Carlingford NSW

2 2 1

This 2-bedroom apartment is in a desirable area opposite Carlingford Court Shopping Centre, close to parks and schools. It is minutes away from quality schools such as James Ruse, King's, and Tara Anglican and is within the catchment for Carlingford Public and Carlingford High school. Buses are also easily accessible from the doorstep, connecting to Epping, Parramatta, and Macquarie University/Shopping Centre.

Features of the property

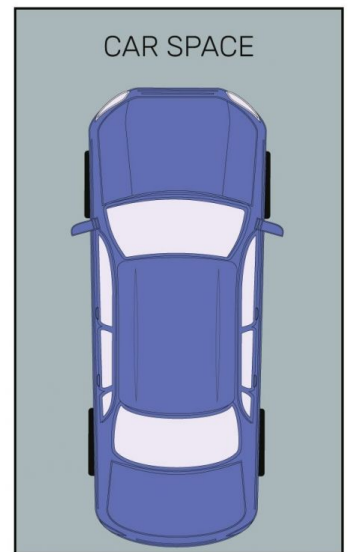
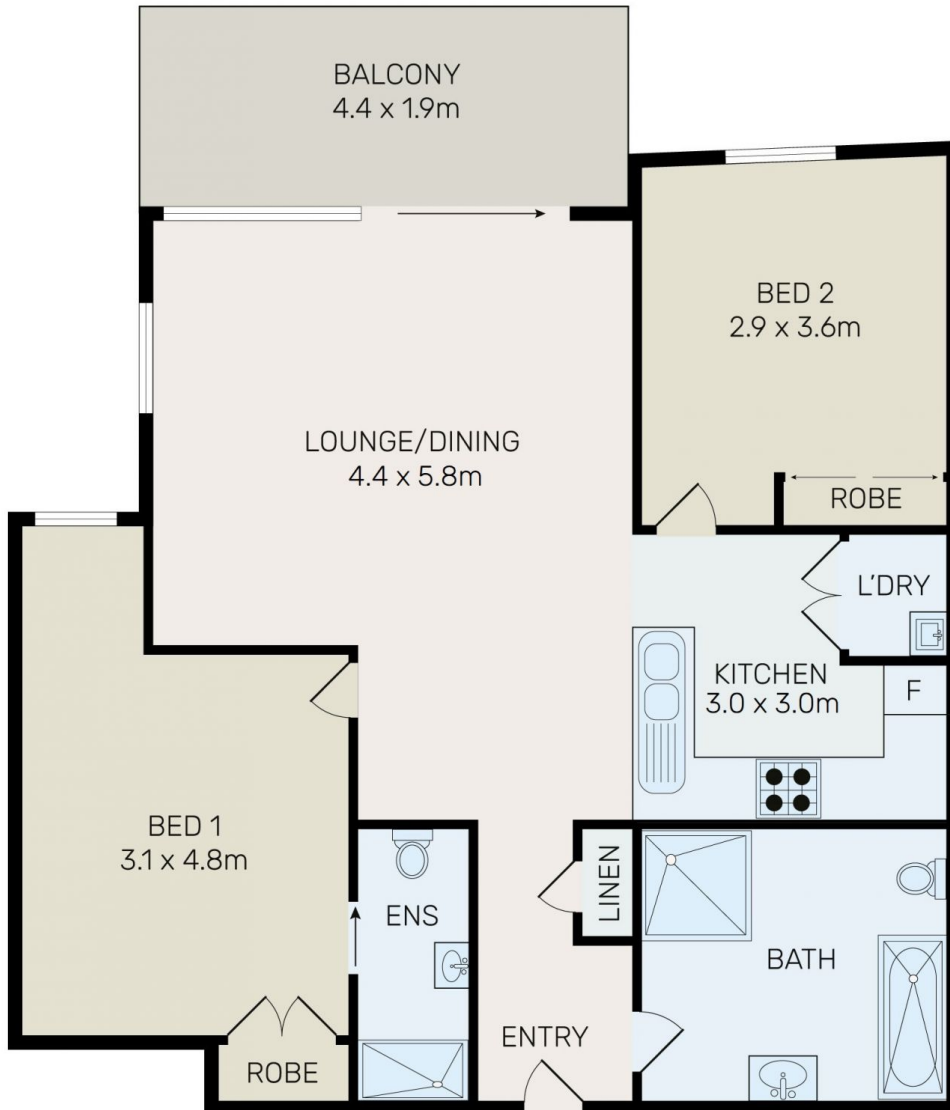
- ? Spacious open-plan living and dining area with a large sunny balcony.
- ? Two generous-sized bedrooms with built-in wardrobes, main with ensuite bathroom

[For full version visit the website](https://www.bmerealestate.com.au/sale/nsw/northern-suburbs/carlingford/residential/apartment/7473173)

Type : Apartment
Building Size : 95 sqm
View : <https://www.bmerealestate.com.au/sale/nsw/northern-suburbs/carlingford/residential/apartment/7473173>



Jeff (kwok Fu) Chau
02 9739 9266



All information contained herein is gathered from all sources we believe to be reliable. However we cannot guarantee its accuracy and interested parties should rely on their own enquiries.



103/237 Carlingford Road, Carlingford