



2702/6 Kingsborough Way Zetland NSW

3 2 2

Experience the best of inner city living with this spacious and well-appointed 2-bedroom apartment. Located on the sixth floor of the highly regarded "The Reserve" complex, this apartment offers both comfort and luxury, with a contemporary design that will stand the test of time.

Situated just 4 kilometers from Sydney CBD, the apartment enjoys a central location that provides easy access to a range of amenities. Within walking distance, you'll find the Green Square town center, train station, and the vibrant Danks Street creative hub. The nearby East Village shopping center offers a variety of shops and boutiques, while Surry Hills boasts a lively dining scene with an array of cafes and restaurants to explore.

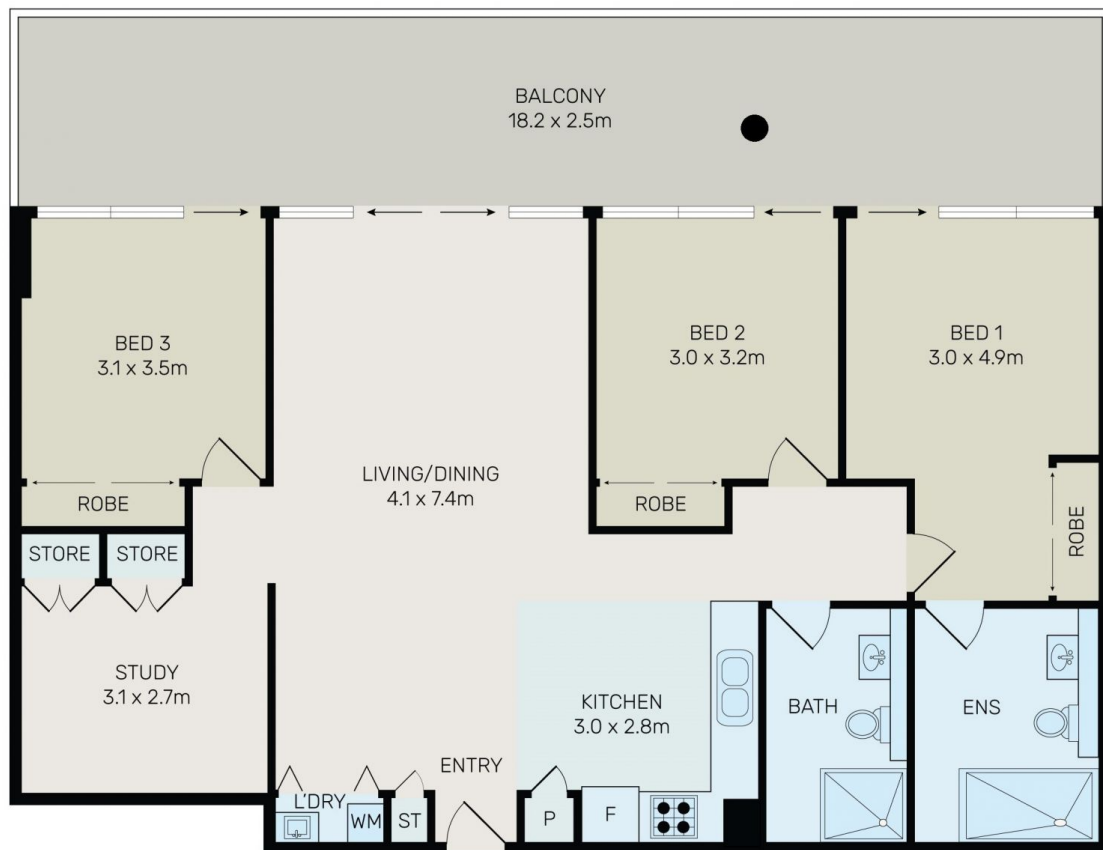
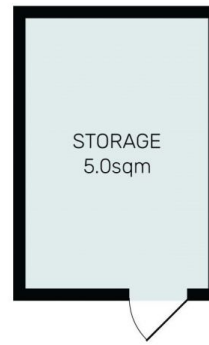
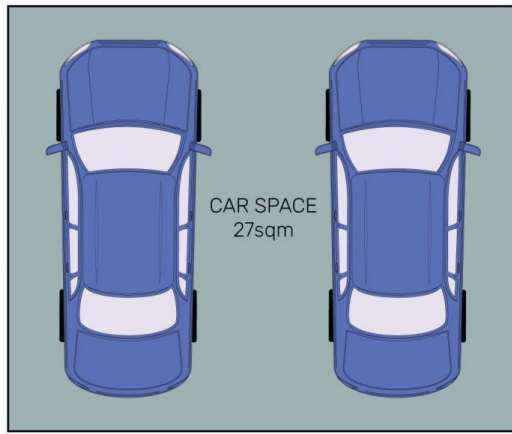
Type : Unit

View : <https://www.bmerealestate.com.au/sale/nsw/east-ern-suburbs/zetland/residential/unit/7532720>



John (junjie) Zhu
02 9739 9266

[For full version visit the website](https://www.bmerealestate.com.au)



All information contained herein is gathered from all sources we believe to be reliable. However we cannot guarantee its accuracy and interested parties should rely on their own enquiries.



2702/6 Kingsborough Way, Zetland