



## G41/9 Epping Park Drive Epping NSW

2 2 1

This luxurious apartment in Epping Park provides an outstanding lifestyle with easy access to Epping and Eastwood Station, top schools, and shops. Set on the Ground floor and enjoying breezy green nature views, this contemporary Two-bedrooms apartment offers generous proportions throughout and is suitable for all ages living. Set in an impeccably maintained complex with landscaped gardens.

### Property Features:

- Spacious combined living and dining areas leading to an open balcony with peaceful bush views
- Covered entertaining balcony with lush garden views
- Two generous-sized bedrooms with built-ins, master

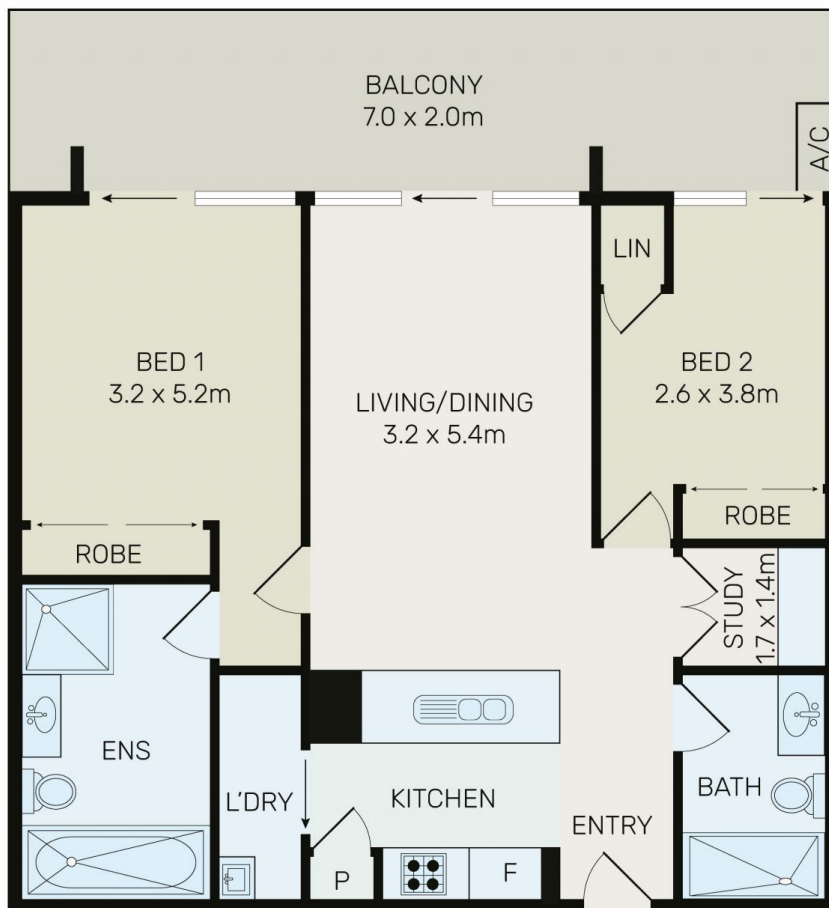
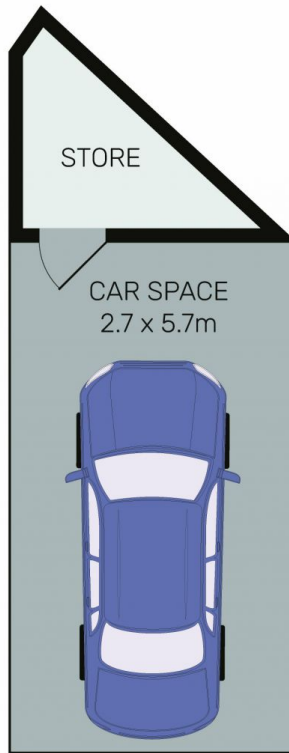
**Type** : Apartment

**View** : <https://www.bmerealestate.com.au/sale/nsw/north-hern-suburbs/epping/residential/apartment/7674169>



**Jeff (kwok Fu) Chau**  
02 9739 9266

[For full version visit the website](https://www.bmerealestate.com.au)



All information contained herein is gathered from all sources we believe to be reliable. However we cannot guarantee its accuracy and interested parties should rely on their own enquiries.



**G41/9 Epping Park Drive, Epping**