



1210/46 Savona Drive Wentworth Point NSW

2 2 1

Set on "The Address" Taiga building, this meticulously detailed apartment is set in one of the best location residential towers of Wentworth Point: With a generous 106m² floor plan, combined with the unrivalled convenience of living in the heart of the Wentworth Point, this incredible home offers an enviable cosmopolitan lifestyle.

Upon entry, you are immediately met with the size of the living room space with stunning City views and a northeast aspect. This is made possible by the expansive, full-height windows which line the wall of the apartment.

The intelligent layout offers an abundance of living and storage space, with a combined lounge and dining area

[For full version visit the website](#)

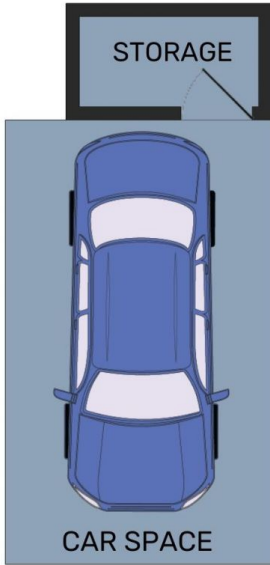
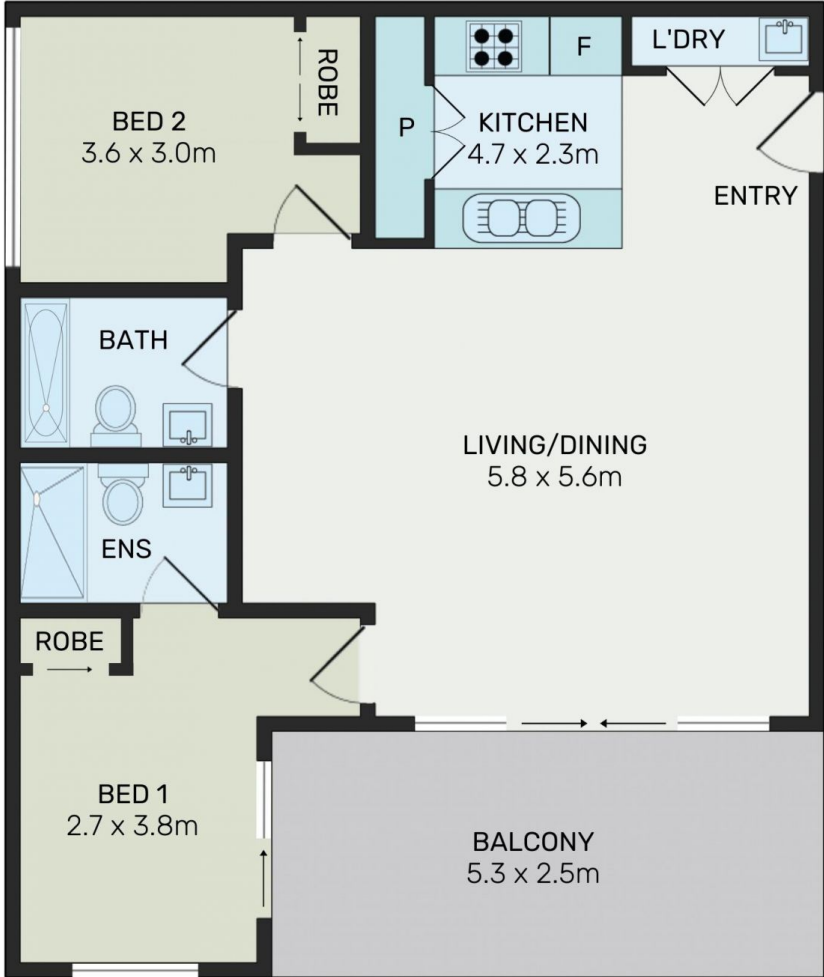
Type : Apartment
Price : \$ 786,000
View : <https://www.bmerealestate.com.au/sale/nsw/inner-west/wentworth-point/residential/apartment/7713124>



Jeff (kwok Fu) Chau
02 9739 9266



John (junjie) Zhu
02 9739 9266



All information contained herein is gathered from all sources we believed to be reliable. However we cannot guarantee its accuracy and interested parties should rely on their own inquiries.



1210/46 Savona Drive, Wentworth Point