



319/2-8 Hazlewood Place Epping NSW

2 2 1

Presenting a contemporary two-bedroom apartment nestled within building JUNIPER of Epping, this residence enjoys a serene cul-de-sac setting, surrounded by meticulously maintained gardens. The apartment is situated on level 3 and boasts a northwest orientation, offering picturesque views of the adjacent park. Its strategic location affords convenient access to Epping train & metro station, Coles, specialty shops, eateries, and local bus services, with Macquarie University only a 20-minute commute.

Features of this apartment include:

? The main bedroom with an ensuite bathroom and a walk-in robe, providing an element of luxury and privacy.

[For full version visit the website](https://www.bmerealestate.com.au)

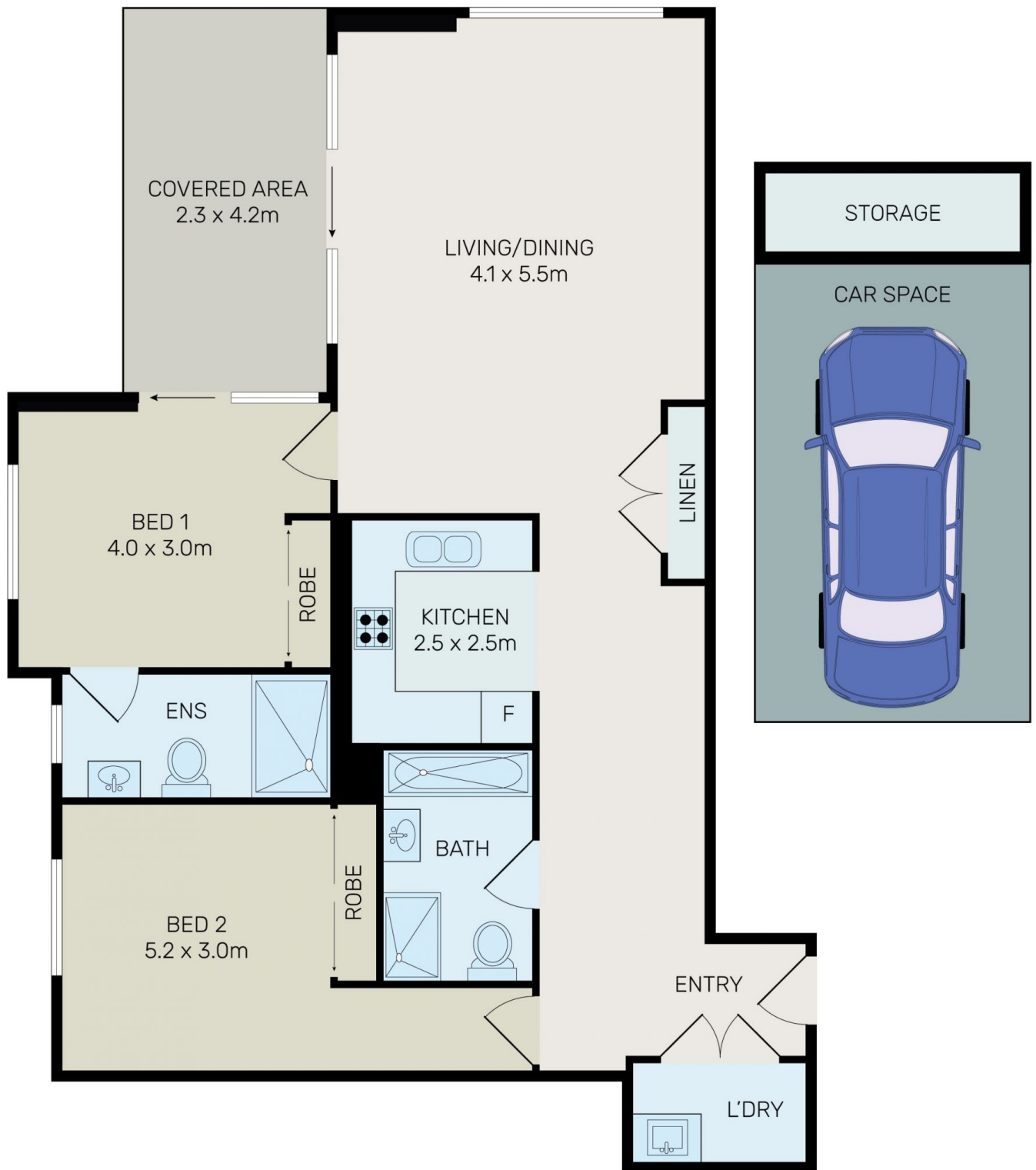
Type : Apartment
Building Size : 100 sqm
View : <https://www.bmerealestate.com.au/sale/nsw/northern-suburbs/epping/residential/apartment/7723711>



Jeff (kwok Fu) Chau
02 9739 9266



John (junjie) Zhu
02 9739 9266



All information contained herein is gathered from all sources we believe to be reliable. However we cannot guarantee its accuracy and interested parties should rely on their own enquiries.



319/2-8 Hazlewood Place, Epping