

## 286/1 Epping Park Drive Epping NSW

2 2 2

Nestled within the picturesque Epping Park Estate, this contemporary gem of a two-bedroom apartment is set on the 2nd floor of well-maintained Epping Park estate with city view and extensive suburb views.

Within the confines of this modern security complex, residents enjoy a plethora of amenities that seamlessly blend convenience and leisure. It's a place where your comfort is prioritized, where the harmonious coexistence of lifestyle and security defines everyday living. Step outside, and you'll find yourself in a leafy haven, a tranquil oasis amidst the hustle and bustle. This is a must-see property, an embodiment of comfort, convenience, and a charming locale that beckons you to make it your own.

**Type** : Apartment  
**Building Size** : 131 sqm  
**View** : <https://www.bmerealestate.com.au/sale/nsw/northern-suburbs/epping/residential/apartment/7774245>

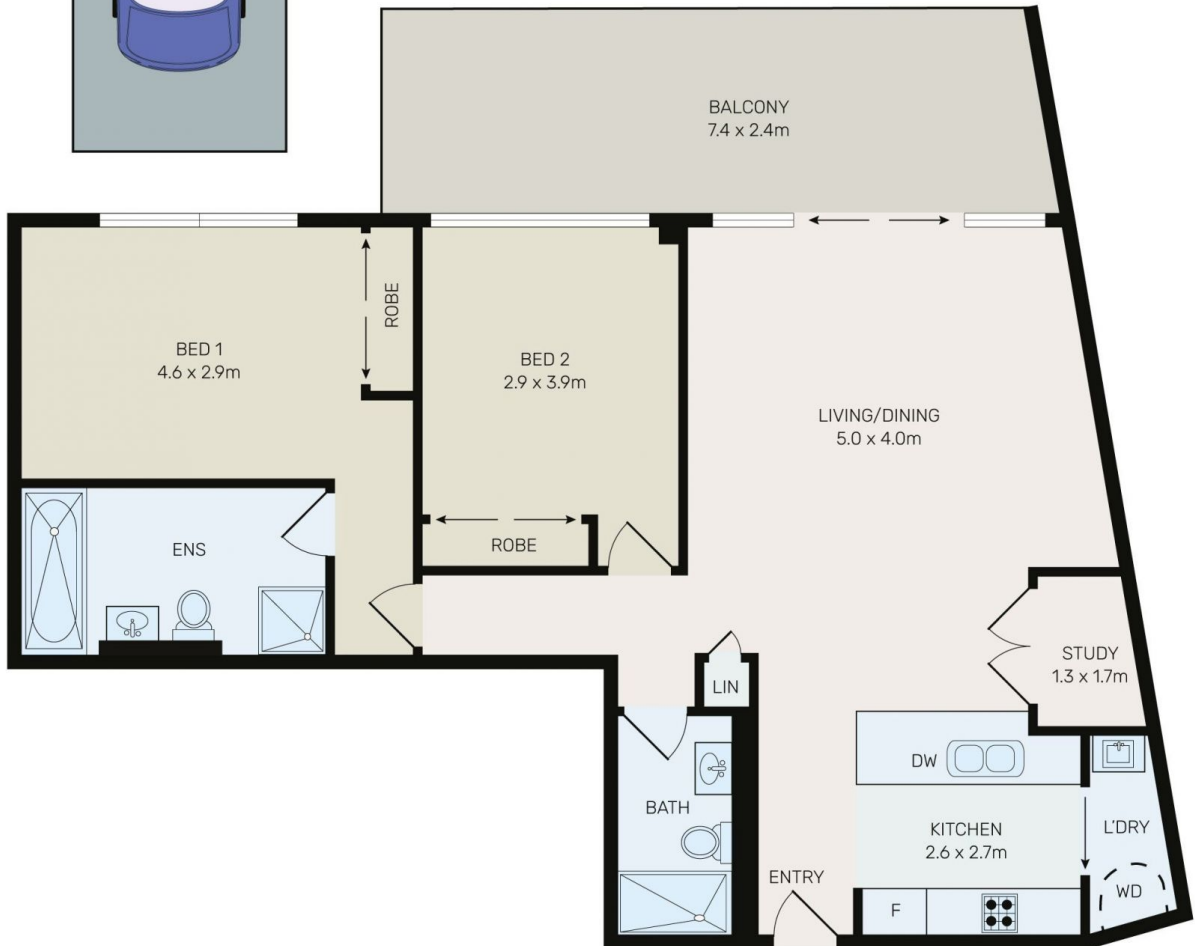
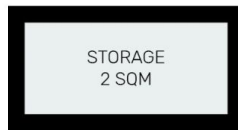
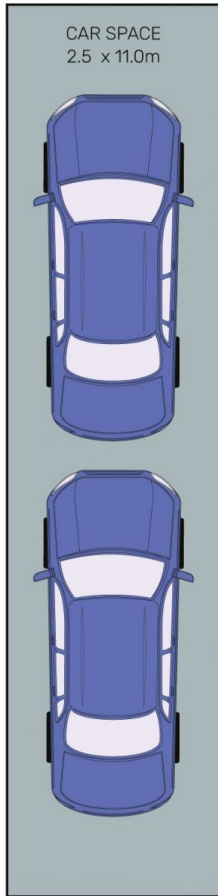


**John (junjie) Zhu**  
02 9739 9266



**Jeff (kwok Fu) Chau**  
02 9739 9266

[For full version visit the website](#)



All information contained herein is gathered from all sources we believe to be reliable. However we cannot guarantee its accuracy and interested parties should rely on their own enquiries.



# 286/1 Epping Park Drive, Epping