



506/46 Amalfi Drive Wentworth Point NSW

1 1 1

Nestled within the architecturally designed "Messina" complex in Wentworth Point, this meticulously presented 1-bedroom apartment offers a remarkable opportunity for both owner-occupiers and savvy investors. Boasting a prime location just a short stroll from the Ferry Wharf, Marina Square Shopping Centre, Wentworth Point Public School, local shops, cafes, restaurants, bus stops, and the convenient Bennelong Bridge, the property seamlessly blends ultimate waterfront living with privacy and sophisticated interiors.

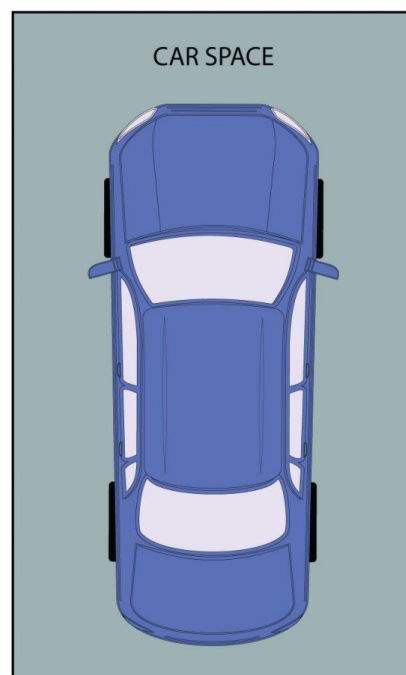
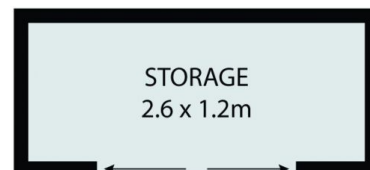
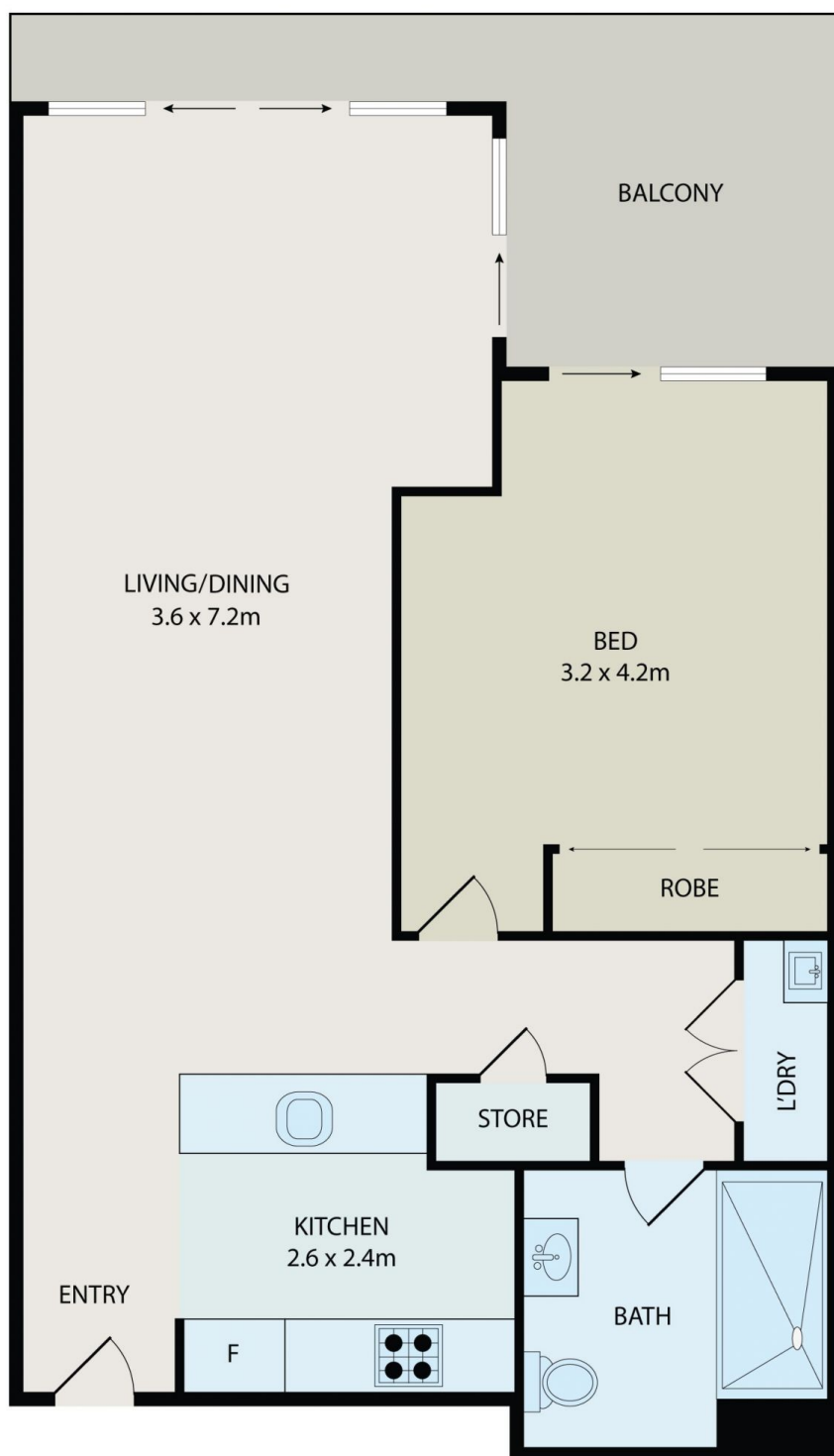
Centrally located just 20 kilometres from Sydney CBD, this private level 5 cozy apartment is surrounded by parklands, superb sporting and recreational facilities which offers a secured and private living environment with exclusive

Type : Unit
Building Size : 81 sqm
View : <https://www.bmerealestate.com.au/sale/nsw/inner-west/wentworth-point/residential/unit/7846305>



John (junjie) Zhu
02 9739 9266

[For full version visit the website](https://www.bmerealestate.com.au)



All information contained herein is gathered from all sources we believe to be reliable. However we cannot guarantee its accuracy and interested parties should rely on their own enquiries.



506/46 Amalfi Drive, Wentworth Point