

109/13 Joynton Avenue Zetland NSW

1 1

Nestled within the renowned "Emerald Park" complex, this exquisite 1-bedroom apartment offers a unique blend of upscale urban living, privacy, and modern elegance. Flooded with natural light, the apartment exudes an inviting warmth and openness, creating a vibrant atmosphere throughout.

Centrally located only 4 kilometres from Sydney CBD, this beautiful apartment is within walking distance to Green Square Train Station, Danks Street's creative hub and Surry Hills' vibrant dining scene, plus short driving distance to UNSW, Sydney University, Bondi junction and Coogee. The East Village shopping centre is just a stone's throw away which features Coles Supermarket, Virgin Active Health Club, Medical Centre and 50 Specialty shops

[For full version visit the website](https://www.bmerealestate.com.au)

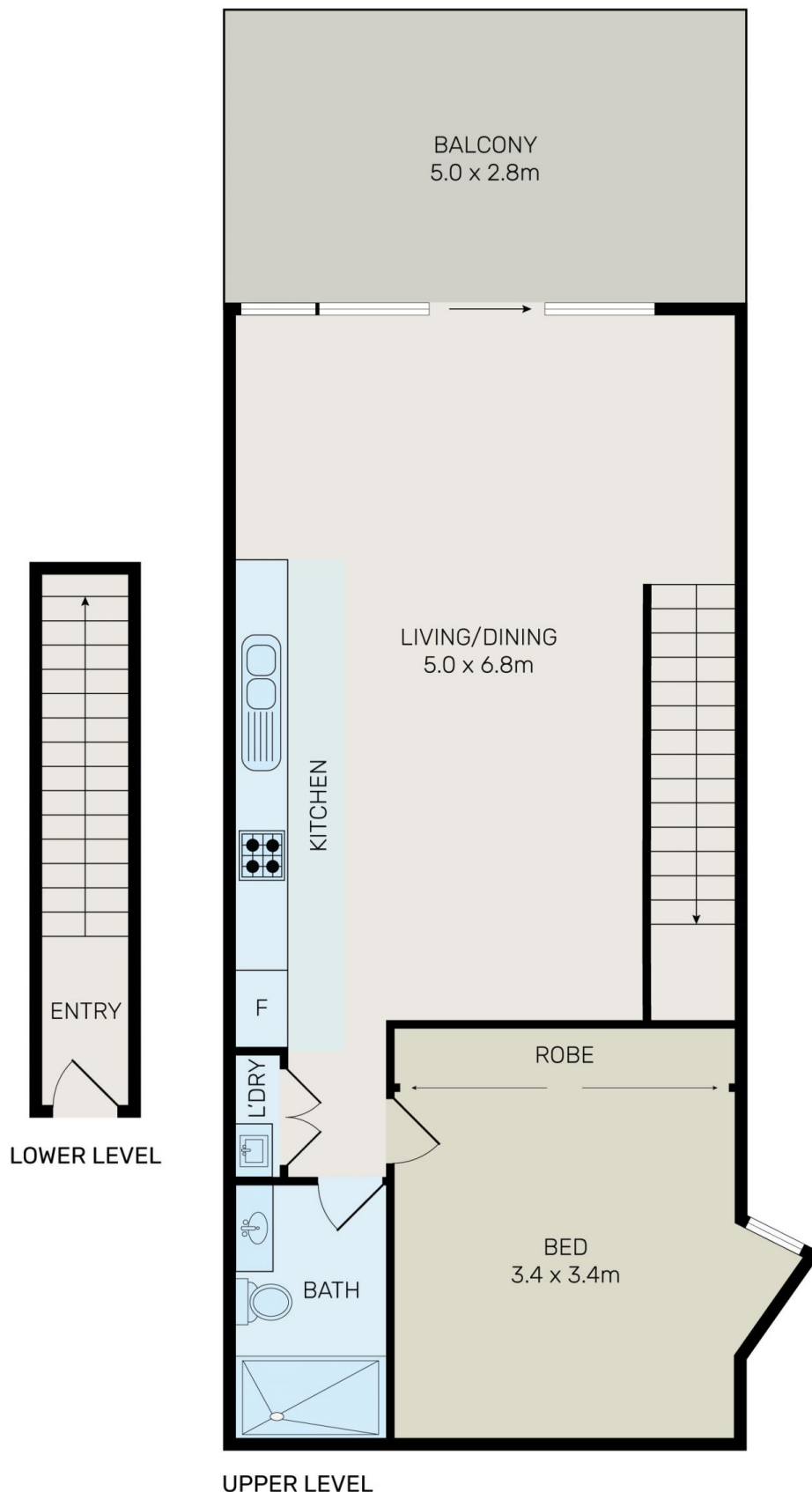
Type : Unit
Price : Vacant Possession!!! Contact Agent!!!
Building Size : 71 sqm
View : <https://www.bmerealestate.com.au/sale/nsw/eastern-suburbs/zetland/residential/unit/7988204>



John (junjie) Zhu
02 9739 9266



Jerry (shijun) Zhao
02 9739 9266



All information contained herein is gathered from all sources we believe to be reliable. However we cannot guarantee its accuracy and interested parties should rely on their own enquiries.



109/13 Joynton Avenue, Zetland