



## 106/6 Bidjagal Road Arncliffe NSW

2 2 1

This upscale 2-bedroom apartment in the contemporary "Serenity" complex in Arncliffe offers a luxurious and modern living experience. Situated on the first level, it boasts a sophisticated interior that sets a high standard for upscale living, promising residents an exquisite lifestyle. Resort-like facilities, including a swimming pool, gymnasium and children's playground are exclusively available to the residents in the complex.

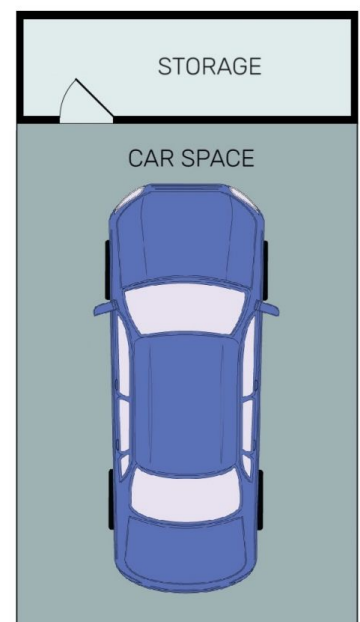
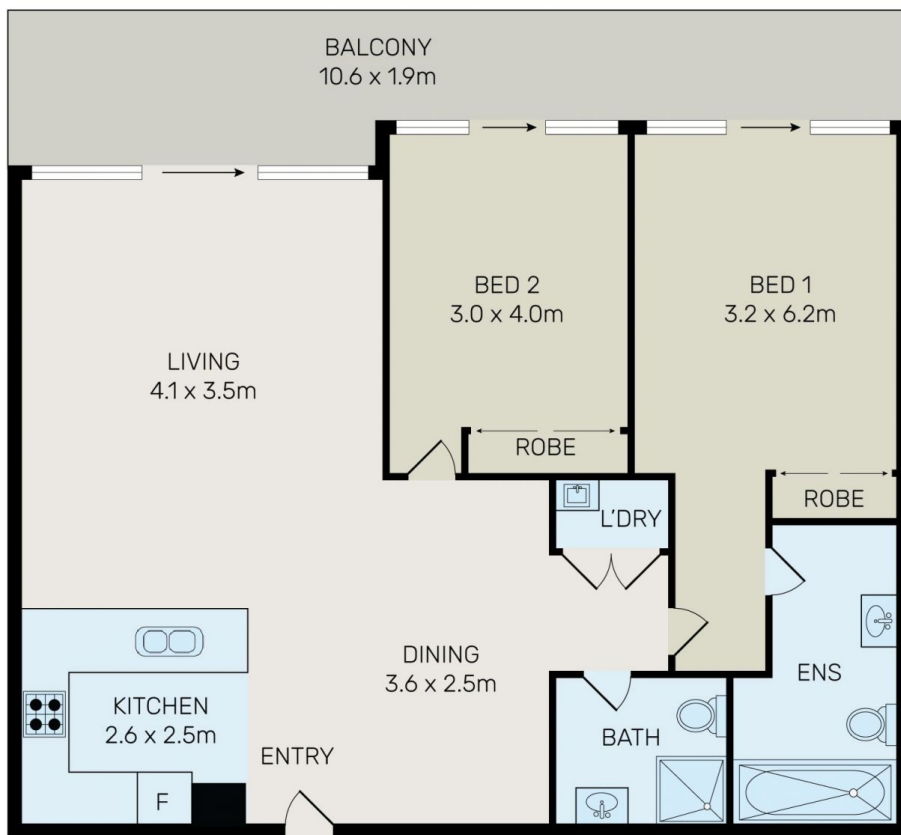
Its prime location, just 10 kilometres from Sydney CBD, ensures convenient access to a plethora of local amenities including shops, cafes, and restaurants. With easy access to the CBD, M5 Link, and the airport, this apartment strikes an ideal balance between luxury living and practicality in transportation, making it a desirable choice for those

[For full version visit the website](https://www.bmerealestate.com.au)

**Type** : Apartment  
**Price** : \$698,000.  
**Building Size** : 116 sqm  
**View** : <https://www.bmerealestate.com.au/sale/nsw/st-george/arncliffe/residential/apartment/8035975>



**John (junjie) Zhu**  
 02 9739 9266



All information contained herein is gathered from all sources we believe to be reliable. However we cannot guarantee its accuracy and interested parties should rely on their own enquiries.



**106/6 Bidjigal Road, Arncliffe**