



B210/40-50 Arncliffe Street Wolli Creek NSW

3 2 2

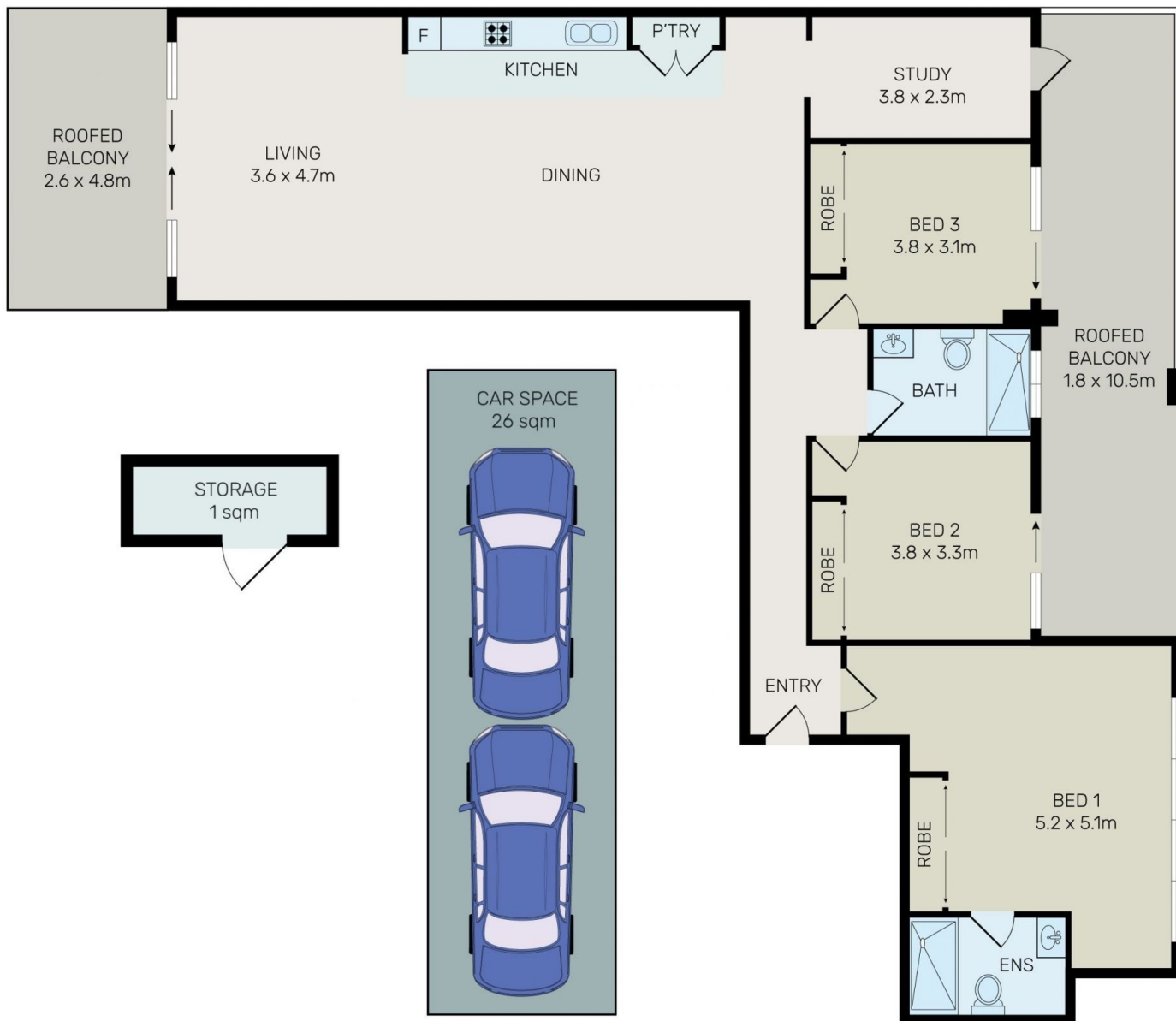
Seize a rare opportunity with this exquisitely maintained 3-bedroom apartment, elegantly situated within the prestigious "Top Garden II" complex in Wolli Creek. This exceptional property epitomizes the pinnacle of modern living, artfully combining privacy with sophisticated interior design.

Nestled a mere 8 kilometres from Sydney CBD, the location is unmatched in convenience. Residents will delight in the proximity to Wolli Creek Train Station, ensuring effortless access to public transportation, as well as the nearby Cahill Park and Cooks River, perfect for recreational pursuits. Essential amenities, including Woolworths, Dan Murphy's, and Wolli Creek Village, are just a leisurely stroll away. This vibrant enclave brims with alfresco cafes, gourmet restaurants, supermarkets, and specialty boutiques, fostering a dynamic and engaging

Price : Contact Agent!!!
Building Size : 178 sqm
View : <https://www.bmerealestate.com.au/sale/nsw/st-george/wolli-creek/residential/apartment/8037576>



John (junjie) Zhu
02 9739 9266



All information contained herein is gathered from all sources we believe to be reliable. However we cannot guarantee its accuracy and interested parties should rely on their own enquiries.

B210/40-50 Arncliffe Street Wolli Creek