



1801/13 Verona Drive Wentworth Point NSW

1 1 1

Perched gracefully on the 18th floor of the distinguished "Savannah" complex, this exquisite one-bedroom residence epitomizes modern luxury amidst the tranquil embrace of Homebush Bay. Surrounded by verdant parklands, this sanctuary offers an unparalleled living experience, where breathtaking vistas of the Parramatta River extend seamlessly to the iconic Sydney CBD skyline.

The interior reveals a masterfully curated open-plan design, ensuring that every moment is accompanied by sweeping, uninterrupted views. From the first light of dawn enjoyed over a leisurely breakfast in the dining area to the serene evenings spent unwinding in the intimate lounge, or the restful nights in the elegantly appointed bedroom, this apartment is a haven of tranquillity and sophistication. The private balcony invites you to immerse yourself in the crisp, refreshing air, offering a front-row seat to nature's daily

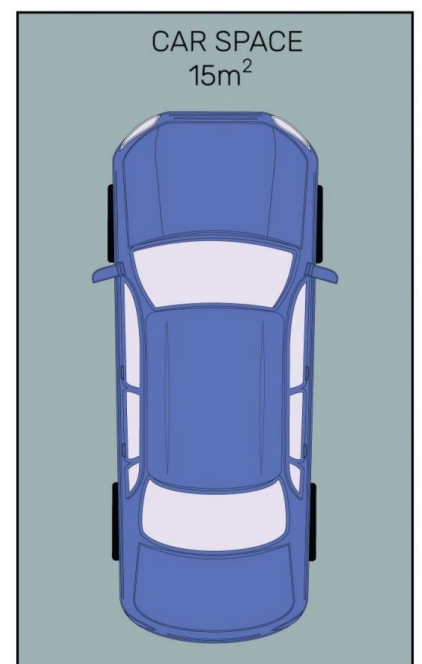
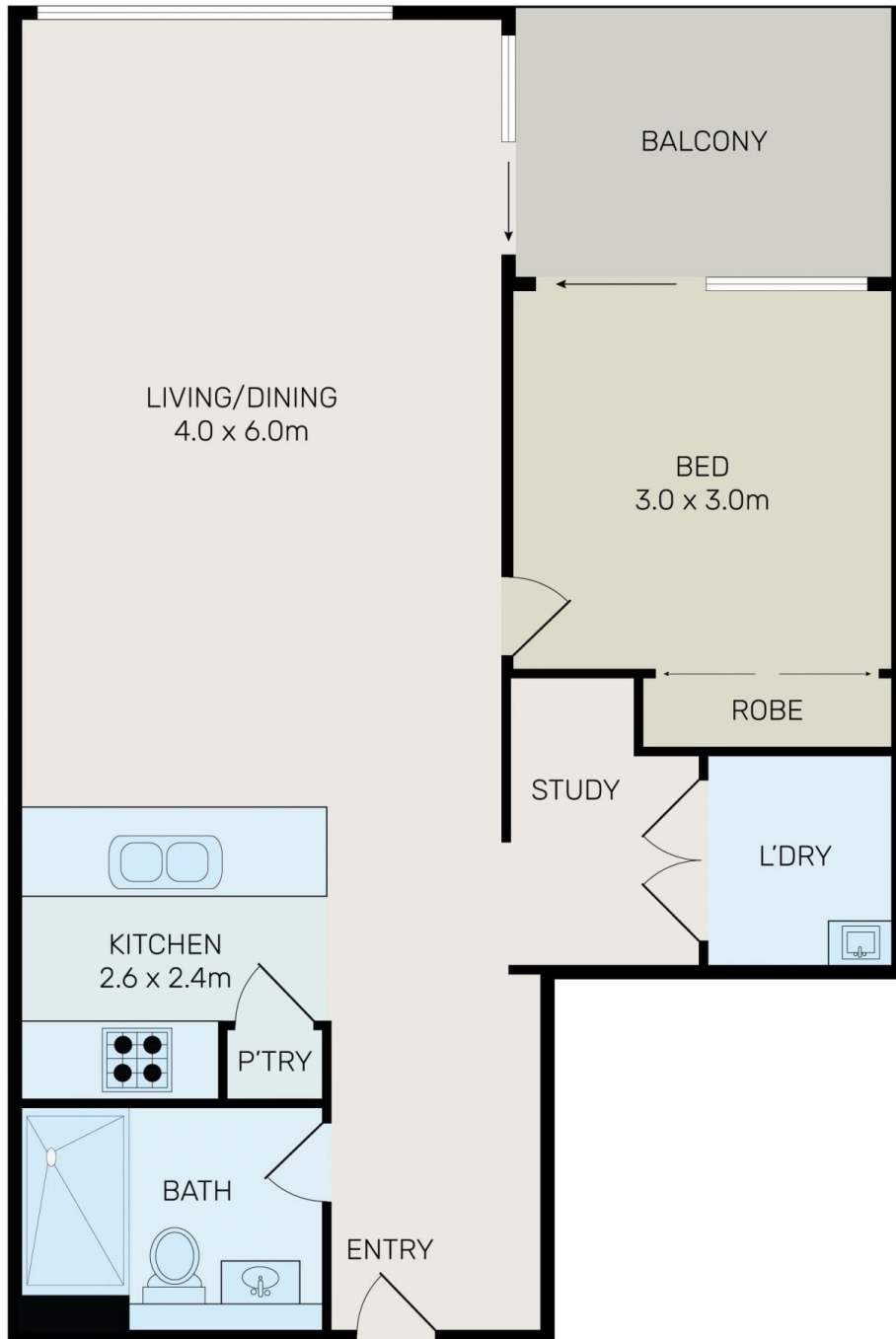
Price : Just Listed!!!
Building Size : 80 sqm
View : <https://www.bmerealestate.com.au/sale/nsw/inner-west/wentworth-point/residential/apartment/8120113>



John (junjie) Zhu
02 9739 9266



Elaine Chu
02 9739 9266



All information contained herein is gathered from all sources we believe to be reliable. However we cannot guarantee its accuracy and interested parties should rely on their own enquiries.



1801/13 Verona Drive, Wentworth Point