



## 526/8 Lapwing Street Wentworth Point NSW

1 1 1

Discover the epitome of waterfront living with this stunning one-bedroom apartment set on the 5th floor of the highly sought-after "Landing" complex in Wentworth Point. Boasting serene garden views, this stylish apartment offers a perfect blend of comfort, modern elegance, and unbeatable convenience.

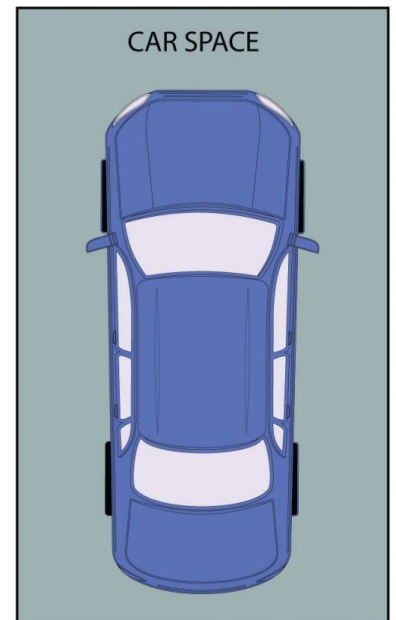
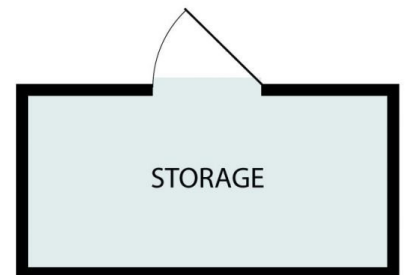
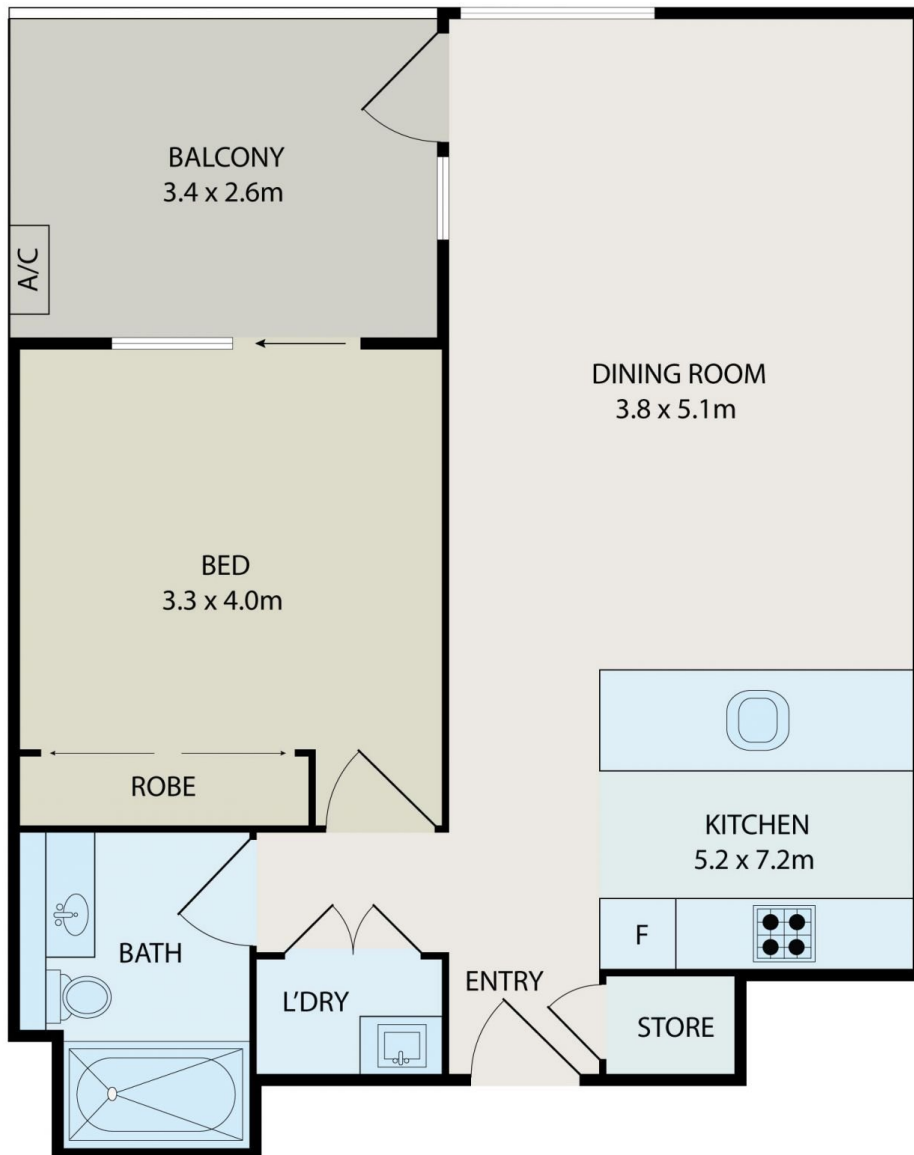
Nestled in the vibrant heart of Wentworth Point, you're just steps away from everything you need. Stroll to Marina Square Shopping Centre for shopping and dining, enjoy nearby cafes and restaurants, or take a short walk to Wentworth Point Public School & High School. Commuting is a breeze with bus stops, the ferry wharf, and Bennelong Bridge, providing a fast link to Rhodes, all within walking distance.

[For full version visit the website](https://www.bmerealestate.com.au)

**Type** : Apartment  
**Price** : \$650,000 To \$680,000  
**Building Size** : 77 sqm  
**View** : <https://www.bmerealestate.com.au/sale/nsw/inner-west/wentworth-point/residential/apartment/8132319>



**John (junjie) Zhu**  
 02 9739 9266



All information contained herein is gathered from all sources we believe to be reliable. However we cannot guarantee its accuracy and interested parties should rely on their own enquiries.



526/8 Lapwing Street, Wentworth Point