



205/101 Forest Road Hurstville NSW

2 2 1

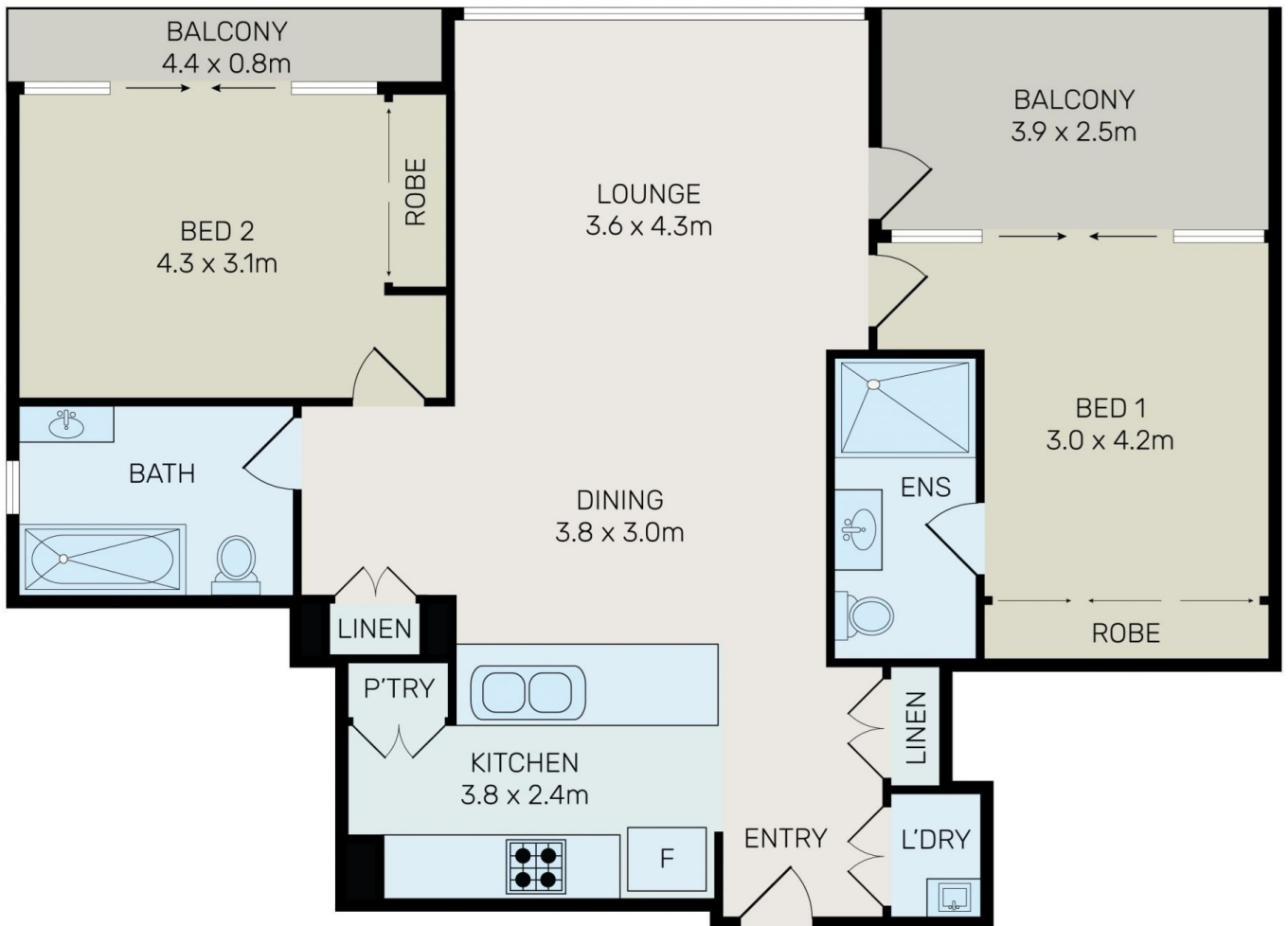
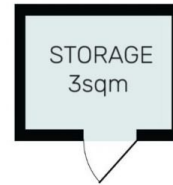
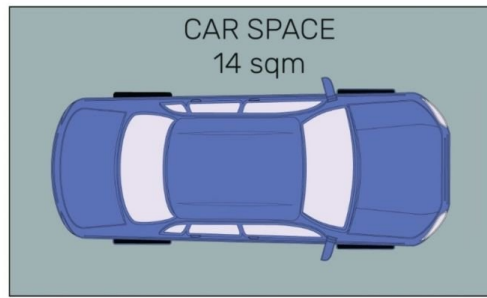
In the heart of Hurstville lies this exquisite two-bedroom apartment on the second level of the esteemed "Lotus" Building in East Quarter Stage 2. Boasting a serene garden view, it offers a tranquil escape in the midst of urban life.

Convenience is paramount, with shops, restaurants, train stations (Hurstville and Allawah), and schools (Hurstville Public School catchment) all within walking distance. Additionally, Westfield shopping centre, the new Woolworths, Kemp Field Park, and various amenities are nearby, ensuring everything you need is just steps away.

Inside, the apartment blends contemporary luxury with the comforting ambiance of a spacious home. Whether you're unwinding in the living area, preparing meals in the stylish

| | |
|----------------------|---|
| Type | : Apartment |
| Price | : \$770 |
| Building Size | : 117 sqm |
| View | : https://www.bmerealestate.com.au/lease/nsw/st-george/hurstville/residential/apartment/8170849 |

[For full version visit the website](https://www.bmerealestate.com.au)



All information contained herein is gathered from all sources we believe to be reliable. However we cannot guarantee its accuracy and interested parties should rely on their own enquiries.



205/101 Forest Road, Hurstville